



AVAILABLE AT:



R & J Machine
MARINE DOCKING & LIFT SOLUTIONS

Lakefield, ON
1-800-461-7638



rjmachine.ca



PRO 5

302098

Dims: 12.5' L x 5' w

Weight: 300 lbs.

Weight capacity: 1,500 lbs.



PRO 6

302096

Dims: 12.5' L x 6' w

Weight: 350 lbs.

Weight capacity: 1,800 lbs.



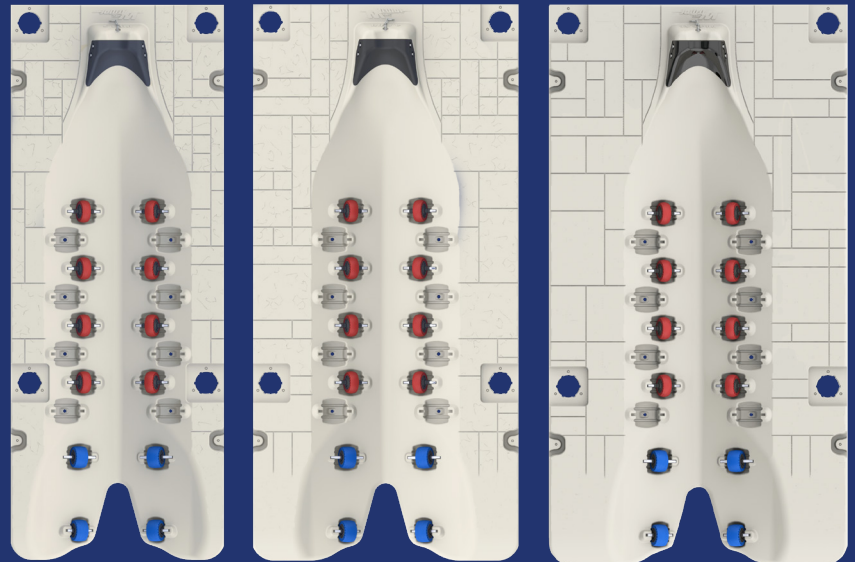
PRO WB

302400

Dims: 12.5' L x 6.5' w

Weight: 380 lbs.

Weight capacity: 2,250 lbs.



Wave Armor Pro Ports: The Original Gold Standard in Floating Drive On Ports.

- Patented design. Easy drive-on and drive-off functionality. Gradual entrance allows for a seamless and flat ride, eliminating jarring motions. Deeper midsection design effortlessly accommodates PWCs with deeper hulls.
- Strategically positioned, super soft bumper-like wheels to allow a soft, smooth, worry free loading experience. Wheel pockets designed for perfect alignment and optimal hull protection every time.
- Pro line of connectors and attachments for seamless integration with your waterfront setup.
- Molded-in bow stop, paired with a robust stainless steel clip and chain, guarantees secure positioning.
- Crafted with an incredibly durable rotomolded shell, fully filled with marine-grade EPS foam, offering maintenance-free high-density polyethylene construction.
- The PRO Wide Body offers additional walk-around space by expanding the width to 80".





PROTECT'R™ CANOPY **NEW!**
10' X 13' PRO 5 PORT
 FOR (2) PRO 5 PORTS SIDE BY SIDE
302698

Dims: 10' W × 13' L

AVAILABLE AT:

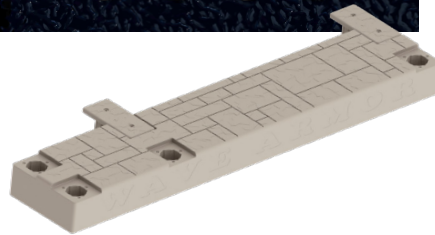


R & J Machine
 MARINE DOCKING & LIFT SOLUTIONS

Lakefield, ON
 1-800-461-7638



rjmachine.ca



**PRO SIDE EXTENSION
 DECK WITH CONNECTIONS**
302472

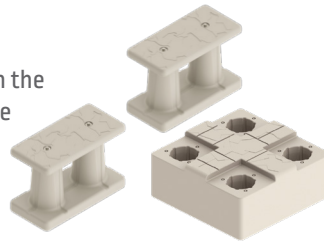
Side Extension deck can be connected to the side of any Pro Series port or in front of 2 Pro 6's. If a front extension is required on a pair of Pro 5's, then you need to add an extra extension deck in the middle of both ports.

- Dims: 144.5" L × 27.5" W × 12" H
- Works with Pro, Pro Maxx and Pro Wide Body ports
- Includes (1) side extension, (1) set of port-to-port connectors 302102
- Note: Cover unused mounting holes with Pro Cap #302151 and Pro Cap Filler #302414 to avoid injury (not included)

PRO CORNER DECK
302473

The Pro Corner Deck was designed to be used in conjunction with the Pro Side Extension Deck 302472 when extra room is desired in the front of the Pro ports.

- Dims: 27.5" L × 27.5" W × 12" H
- (1) corner, (1) set of port connectors 302102



**PRO PORT TO PORT
 CONNECTION KIT**

302102

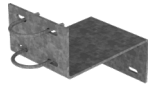
- Includes 2



PORT TO FIXED DOCK KIT

301281 FOR 2" PIPE

301282 FOR 4" PIPE



- (2) Z-brackets, (4) U-bolts + hardware included
- Requires 2" or 4" pipe sleeves sold separately

**TELESCOPING 8-12" PORT TO
 FIXED DOCK OR SEAWALL KIT**

301883 FOR 2" PIPE

301884 FOR 4" PIPE



- (2) adjustable aluminum brackets, (2) U-bolts + hardware included
- Requires 2" or 4" pipe sleeves sold separately



PRO CAP FILLER

302414 QTY 4

302415 QTY 24

Covers unused mounting pockets.

PRO PORT PIPE SLEEVE

302128 2"

302152 3"



- Bolt-on design
- 2 pipe sleeves + hardware included

PRO SIDE POST ATTACHMENT KIT

302649 2"

302650 3"



- 12" H
- Includes 2 + hardware



**PRO PORT BOLT
 ON CAP**

302151 • Includes 2

PRO PORT FRONTPIPE MOUNT

302411 2" **302412** 3" **302768** 4"

- Hardware included
- Can be used in combination w/ other brackets



**PRO PORT SIDE
 CONNECTION TO
 FLOATING DOCK KIT**

302507

- Includes 1 + hardware



**PRO PORT TO
 WAVE DOCK KIT**

302196

- Includes 2 + hardware



**PRO PORT SIDE CONNECTION
 TO WAVE DOCK KIT**

302365

- Includes 1 + hardware



**PRO PORT TO FLOATING
 DOCK KIT**

302197 19.75" C-CHANNEL

302198 25.75" C-CHANNEL

- Includes 2 + hardware

