



Winterizing your R&J Machine Floating dock !



Step 1

Start off by untrimming and removing the decking from your ramp or tapered ramp.

Then disconnect your floating dock from your ramp. It's often easiest to pick up your ramp and place it on your floating dock for storage.

Disconnect your ramp from shore if anchored down



~Tips~

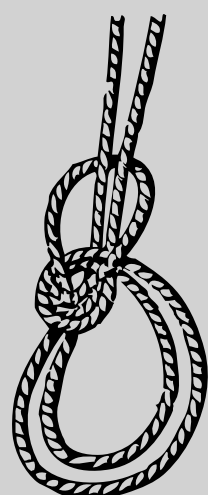
Tying up your anchors...

Tie off your anchors with a boat fender or a small block of wood so you can retrieve them next year! Be sure to use plenty of rope so you don't lose your anchors!



Step 2

Detach your anchors from the anchor plates, tie off a long rope and attach to a buoy. If your area is very protected it can be sufficient to just loosen off your chains and let the dock freeze in place.



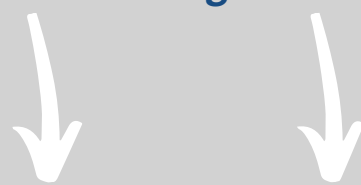
Finally you can float your dock over to a protected area and tie off for the winter. Make sure to tie off your dock more than once to ensure it doesn't break free over the off-season.

Step 3 - Optional

If you have a lift up tapered ramp, Hook up your winch cable to your center yoke cable and lift your tower.



Make sure your ramp and float are high enough to not be damaged by incoming ice



Installer tip !

It's often best to float your floating dock over to a shallow bay or protected area.



Step 4

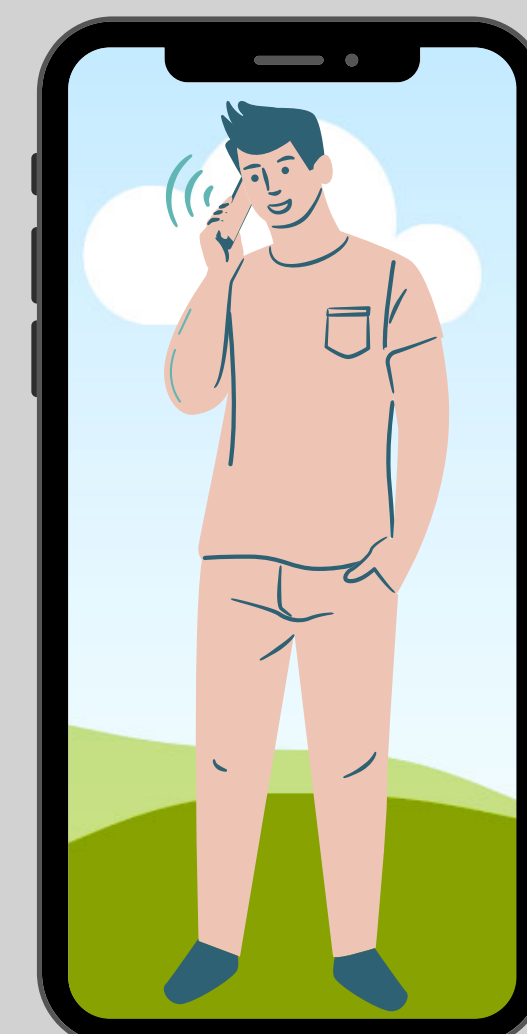
Now is a great time to double check your cables aren't twisted or tangled and you see no visible damage.



Now you can crank up your ramp to the recommended height.

Call us any time, we are happy to help!

If you have any questions, or are stuck, feel free to give us a call!



rjmachine.ca

705.652.6731

Toll Free 1.800.461.7638

service@rjmachine.ca

1601 Eighth Line, Lakefield, ON, K0L 2H0

