



QUICK Tips

How to replace the cable on your lift!



Step 1

Start off by removing your boat from the boat from the lift.

Take note of the route that the cable is ran in.

You will have to take the weight off of the cable.. run the lift all the way down, or strap the bed up.



Step 2

Remove the old cable, disconnecting at its starting point, as well as on the winch itself.

Run the new cable in the same route as the old cable.



Routing – PWC and vertical lifts.



Step 3

Re-attach the cable of the shackle side along with the winch side! Double check to make sure both ends are tight!

Now is a good time to grease any pulleys that your boatlift has!



~Tips~

Be careful ...

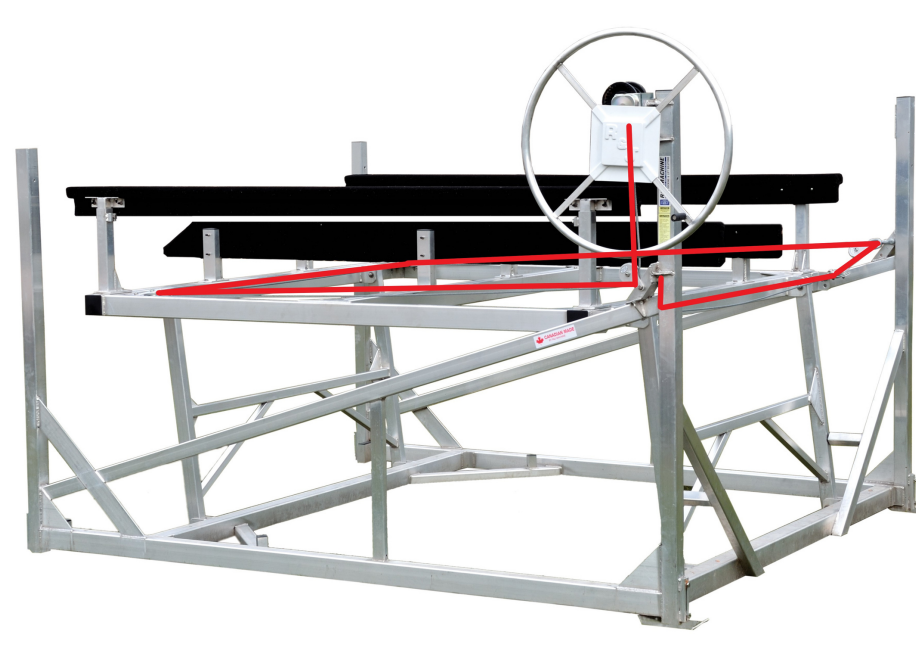
Older cables can be rusted and have burs that can be sharp!

Wear Gloves!!



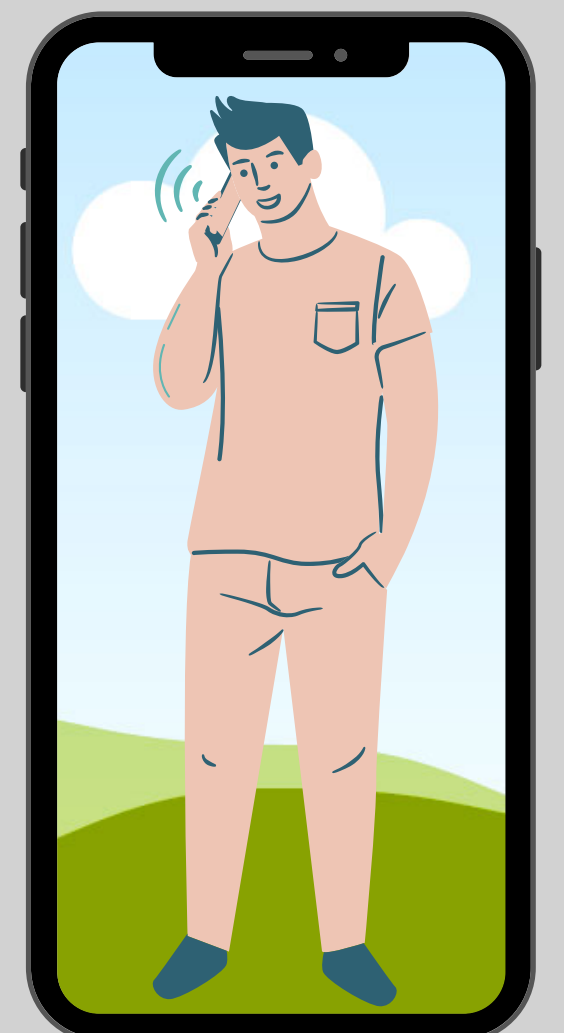
Be mindful ...

Take note of how your cable is run before removing the damaged cable..



Call us any time, we are happy to help!

If you have any questions, or are stuck, feel free to give us a call!



rjmachine.ca

705.652.6731

Toll Free 1.800.461.7638

service@rjmachine.ca

1601 Eighth Line, Lakefield, ON, K0L 2H0

