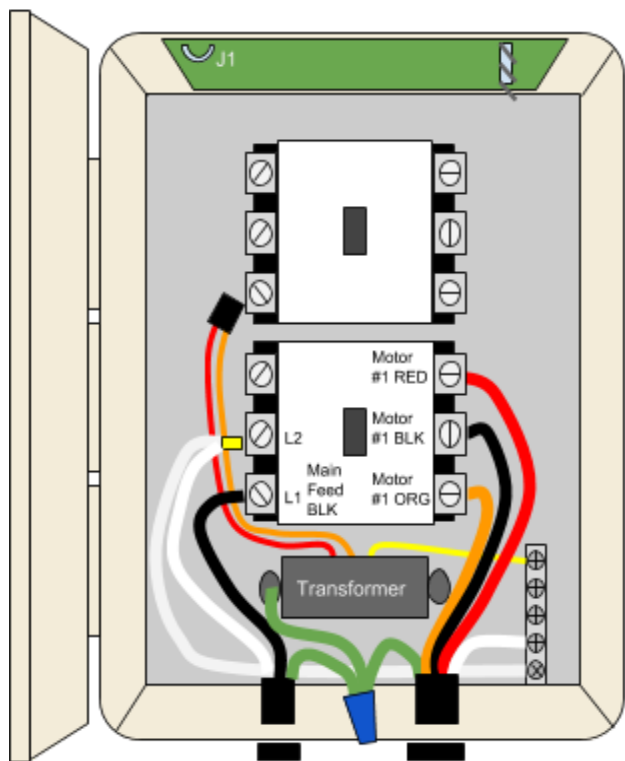


WIRING DIAGRAM - GEM REMOTE to AO Smith/Regal Beloit Motors

115V



POWER CABLE

Power BLACK to L1
 Power WHITE to L2
 Tie all three grounds together

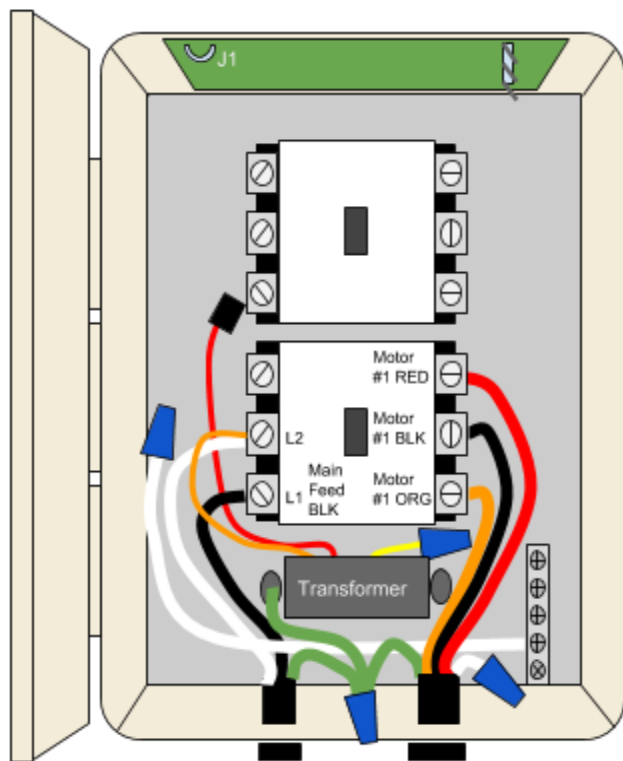
MOTOR CABLE

Motor RED to "Motor #1 RED"
 Motor BLACK to "Motor #1 BLK"
 Motor ORANGE to "Motor #1 ORG"
 Motor WHITE to Neutral Bar

INTERNAL GEM SETUP 115V

Transformer YELLOW to Neutral Bar
 Transformer RED, ORANGE Capped Off Separately
 Jumper WHITE from Neutral Bar to L2

230V



POWER CABLE

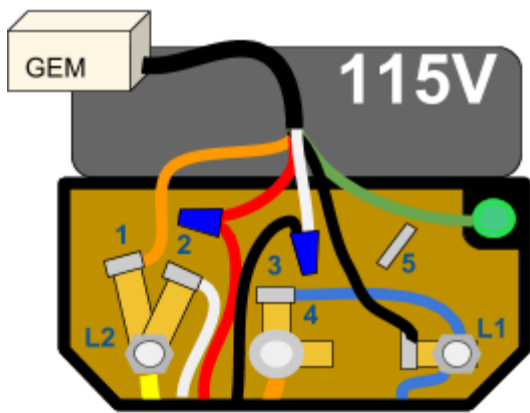
Power BLACK to L1
 Power WHITE to L2
 Tie all three grounds together

MOTOR CABLE

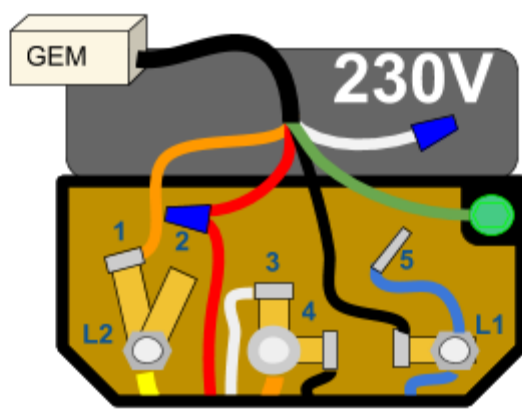
Motor RED to "Motor #1 RED"
 Motor BLACK to "Motor #1 BLK"
 Motor ORANGE to "Motor #1 ORG"
 Motor WHITE Capped Off

INTERNAL GEM SETUP 230V

Transformer YELLOW, RED Capped Off Separately
 Transformer ORANGE to L2
 Jumper WHITE from Neutral Bar Capped Off



Switch Red to Motor Red (Wire Nut)
 Switch White to Motor Black (Wire Nut)
 Switch Orange on L2 (Spade Terminal)
 Switch Black on L1 (Spade Terminal)
 Motor White on L2 (Spade Terminal)
 Motor Blue on #3 (Spade Terminal)



Switch Red to Motor Red (Wire Nut)
 Switch White Capped Off (Wire Nut)
 Switch Orange on L2 (Spade Terminal)
 Switch Black on L1 (Spade Terminal)
 Motor White on #3 (Spade Terminal)
 Motor Black on #4 (Spade Terminal)
 Motor Blue on #5 (Spade Terminal)

INTERCHANGE MOTOR RED & MOTOR BLACK TO REVERSE MOTOR ROTATION (i.e. DOWN position of switch causes lift to go UP instead)