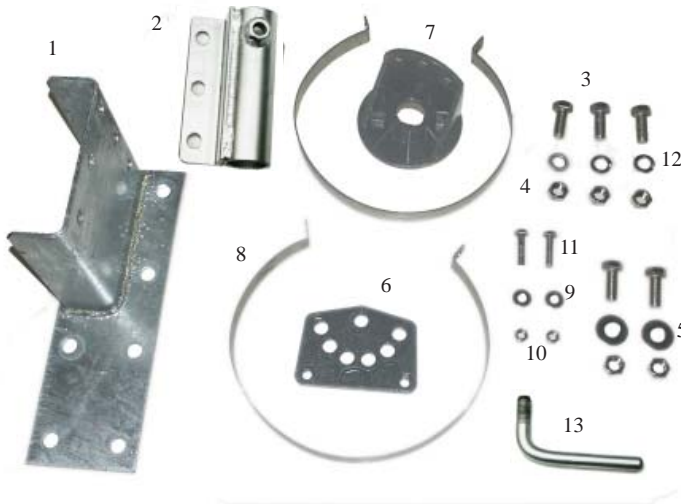




Universal Dock or Piling Mount Assembly & Installation Instructions

PARTS INCLUDED

1. Dock Mount Base (1)
2. Pipe Clamp (1)
3. 1/2"-13 x 1 1/4" Hex Head Bolt (5)
4. 1/2"-13 Nut (5)
5. 1/2" Flat Washer (2)
6. 9 Hole Plate (1)
7. 4 Hole Angle Bracket (1)
8. Dock Mount Strap (2)
9. 5/16" Flat Washer (2)
10. 5/16" Nut (2)
11. 5/16"-18 x 1 1/2" Hex Head Bolt (2)
12. 1/2" Lock Washer (3)
13. Lock Handle (1)



TOOLS & SUPPLIES NEEDED

- 1" NPT or BSPT (European) Threaded Galvanized or Stainless Steel Pipe up to 10' long (1)
- Lag Screws or Bolts for Mounting to Dock (8)
- 3/4" Wrench
- 1/2" Wrench or 1/2" Socket with Ratchet
- 3/4" Socket with Ratchet
- 1" galvanized or S.S. pipe cap (optional)

ASSEMBLY INSTRUCTIONS

Note: Customer must provide the 1" galvanized or stainless steel threaded pipe extension not more than 10 feet in length. Since applications may vary, the user will supply the appropriate lag screws or bolts to secure the dock or piling base. Kasco urges that the base be mounted as securely as possible. **For salt water use, Kasco suggests that you use 1" stainless steel pipe.**

STEP ONE:

Determine the most suitable application for your situation. Install the Dock Mount Base to your dock or pil-

ing using 8 mounting lag screws or bolts supplied by user. For mounting on dock surface or the horizontal surface make one end of the Dock Mount Base flush with the dock edge as shown. For piling or other vertical surface mount large end down as shown.



STEP TWO:

Wrap one of the Dock Mount Straps around the De-icer can. Insert one 5/16 – 18 x 1 1/2" Hex Head Bolt through the 9 Hole Plate and then through the two holes in the strap. Use a 5/16" Washer and 5/16" Nut to hold the strap onto the can. Position the band as close to the De-Icer cage as possible and tighten using the 1/2" Wrench or Socket. Do not over tighten.



STEP THREE:

Attach the 2nd draw strap to the Deicer can following the same procedure as step 2 using the lower hole on the 9 hole plate.

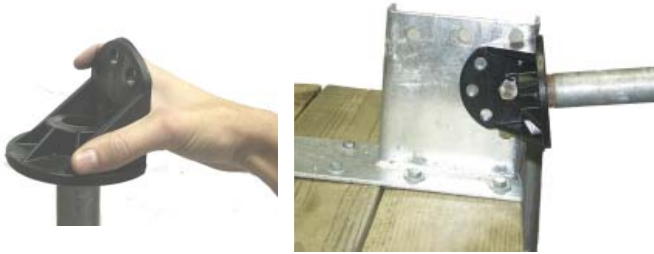


2400D (1/2 HP) Band Placement

3400D & 4400D (3/4 & 1 HP) Band Placement

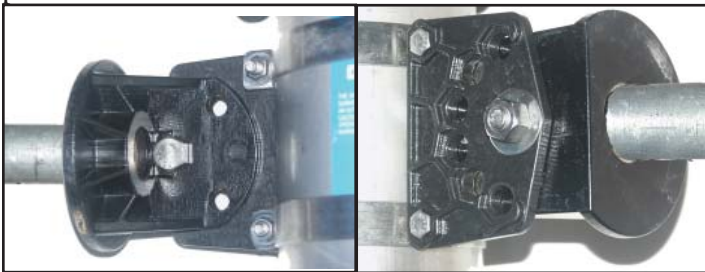
STEP FOUR:

First, thread the user supplied pipe extension (more than 10 ft is not recommended) into the 4 Hole Angle Bracket by hand to start to ensure the threads are aligned properly. Then temporarily mount it to the Dock Mount Base using one of the 1/2" Hex Head Bolts included to tighten further. Hand tighten only.



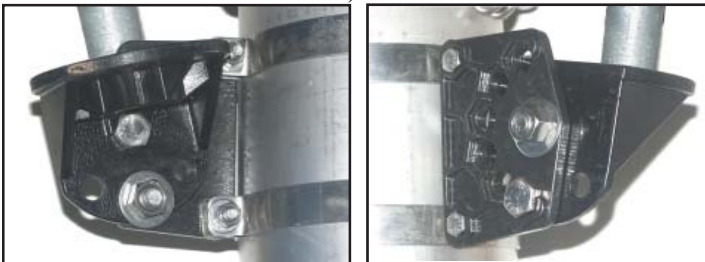
STEP FIVE:

Remove the 4 Hole Angle Bracket from the Dock Mount Base and attach the 4 Hole Angle Bracket to the 9 Hole Plate using a 1/2 - 13x1 1/4" Hex Head Bolt, 1/2" Flat Washer and 1/2"-13 Nut. Hand tighten at this point.



STEP SIX:

Adjust the angle of the 4 Hole Angle Bracket. The deicer can be set in 15 degree intervals. Once the 4 Hole Angle Bracket is in the desired position, insert one 1/2 - 13x1 1/4" Hex Head Bolts through the hole in the 9 Hole Plate that is aligned with the hole in the 4 Hole Angle Plate. Use a 1/2" Flat Washer and 1/2"-13 Nut to hold the bolt in place and tighten using the 3/4" Wrench or Socket. Make sure all bolts and nuts are now tight. (If more than one set of holes align use the holes closest to the de-icer.)



STEP SEVEN:

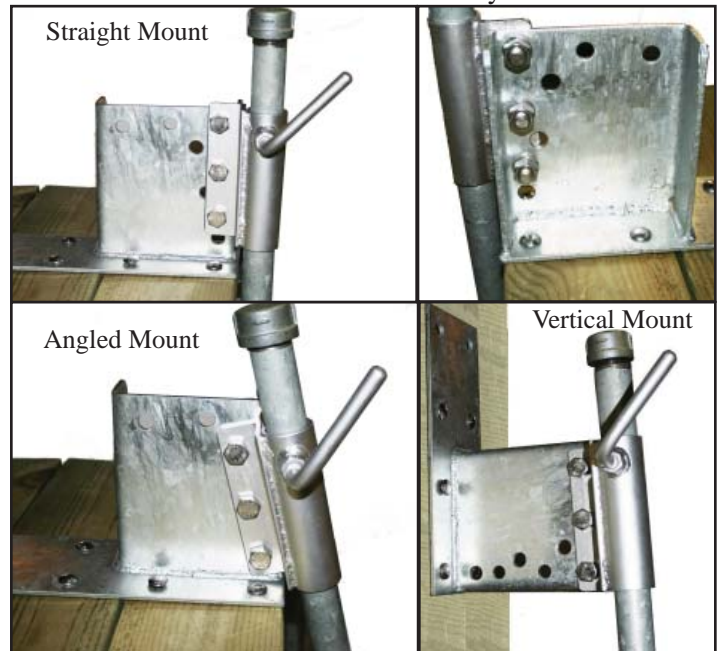
Place the Pipe Clamp onto the pipe extension. Make sure the lock handle is at top. Tighten lock handle temporarily.

Recommended: For extra security, attach a 1" pipe cap on the top of the pipe in case the lock handle accidentally becomes loose.



STEP EIGHT:

Line up the 3 holes of the Pipe Clamp with the 3 vertical holes on the Dock Mount Base (connected to the dock or piling). Insert a 1/2 - 13x1 1/4" Hex Head Bolt into the top hole of the clamp and base. Use the 1/2" Lock Washer and 1/2-13" Nut to hold the bolts in place. Repeat with the two remaining holes and use the 3/4" Wrench and 3/4" Socket and Ratchet to tighten all three. (Use the 3 side holes shown in picture for straight mounting on a dock, use the 3 angled holes for an angled mount on a dock, or use the top 3 holes shown in picture when mounting to a piling.) Now you can adjust the position of the deicer by using the lock handle. Your Universal Dock Mount is now ready for use.



The Industry Leader in Ice Control Engineering.

KASCO MARINE, INC.
800 Deere Road
Prescott, WI 54021-1241
Phone (715) 262-4488
Fax (715) 262-4487
www.De-Icer.com
sales@kascomarine.com

