

# Instruction Sheet

Product  
**Vertical Lift**

Element Name:

**Vertical Lift: Frame Parts**

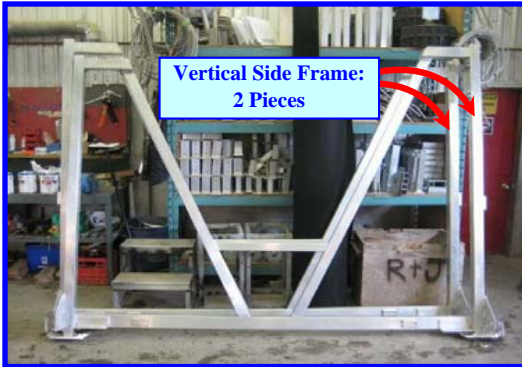
- Base
- With
- Less

Date Purchased: \_\_\_\_\_

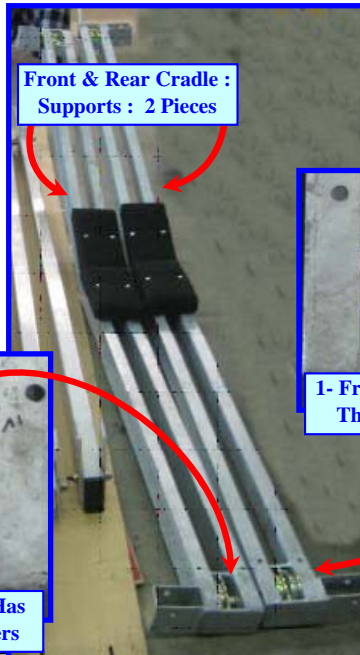
Size of lift: \_\_\_\_\_

Author: JBC

Date Modified: March 10, 2011



Cradle Side Cable Supports : 2 Pieces



Horizontal Lower Vertical Side Support Connectors : 2 Pieces

**NOTES AND COMMENTS:**

# Instruction Sheet

Product  
**Vertical Lift**

Element Name:  
**Vertical Lift: Upright Frame Assembly**

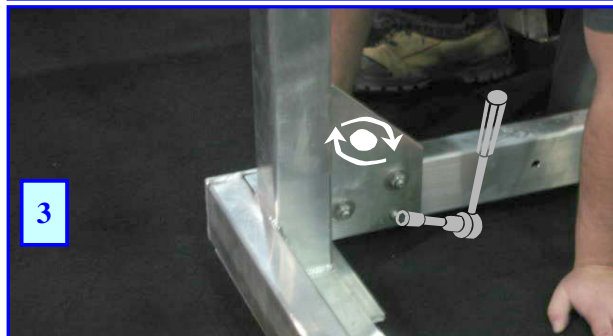
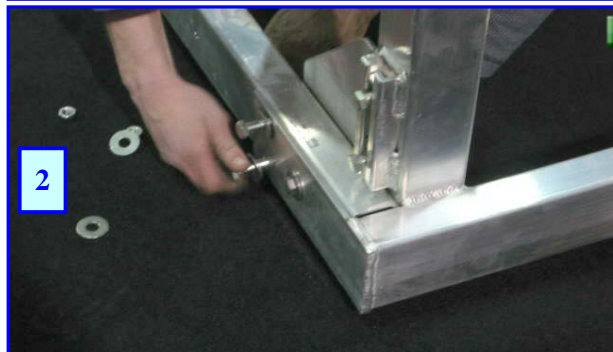
- Base
- With
- Less

Date Purchased: \_\_\_\_\_

Author: JBC

Size of lift: \_\_\_\_\_

Date Modified: March 10, 2011



#	What to do!	How to do it!	Why you do it!
1	Assemble lower horizontal side supports to Upright vertical frame	Place lower support rail to vertical side, align holes	
2	Secure horizontal support to vertical support	Place Three- 1/2" bolts & washers through frame from the outside	
3	<u>LOOSLEY</u> secure bolts	Thread 3 nyloc nuts and washers to bolts and loosley tighten. DO NOT OVER TIGHTEN	<b>DISTORTION MAY OCCUR OR BREAKAGE OF THE FRAME IF OVER TIGHT. THE FRAME MUST BE SQUARED BEFORE FINAL TIGHTENING IS COMPLETE</b>
	<b>REPEAT SAME ASSEMBLY PROCEDURE ON THE OPPOSITE SIDE VERTICAL SUPPORT</b>		<b>IMPORTANT POINT!</b> 
	<b>REPEAT SAME ASSEMBLY PROCEDURE ON THE REAR SUPPORT</b>		
	THIS WILL COMPLETE THE OUTER SUPPORT FRAME INITIAL STRUCTURE		

Comments or Notes:

Left side shown –Right side similar

# Instruction Sheet

Product  
**Vertical Lift**

Element Name:

**Vertical Lift: Upper Brace Assembly**

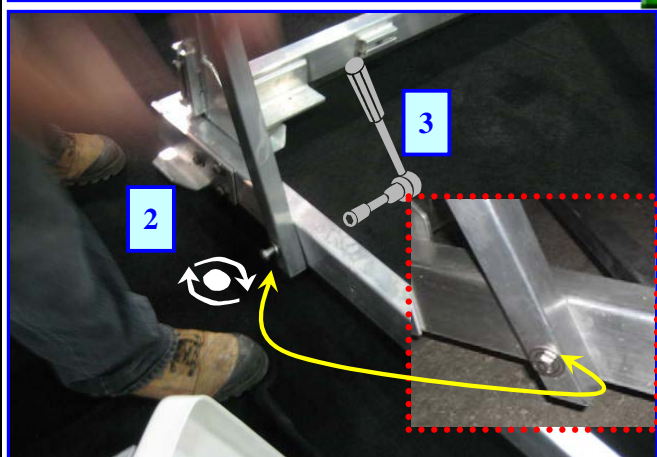
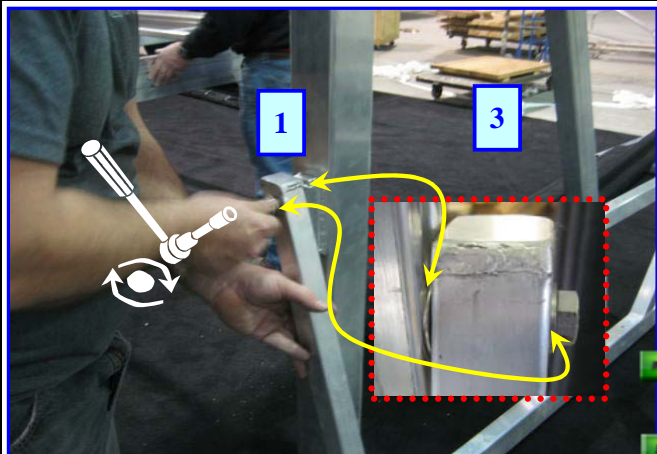
- Base
- With
- Less

Date Purchased: \_\_\_\_\_

Author: JBC


Size of lift: \_\_\_\_\_

Date Modified: March 10, 2011



Left side shown –Right side similar

Front shown –Rear similar

#	What to do!	How to do it!	Why you do it!
1	Attach the vertical upright side support to side vertical frame. (Cap on top)	Align support to vertical support at the front and thread a 1/2" bolt with washer & a washer behind the support into the square nut holder	
2	Attach the vertical support to the lower cross support	Align support to the lower support cross beam and thread a 1/2" bolt and washer through and a nyloc nut and washer	
3	Loosely secure top and bottom bolts	Use a 3/4" or 19 mm socket or wrench to tighten	<p><b>IMPORTANT POINT!</b></p> <p>The supports should not be tightend at this point till all the braces are attached. Before final tightening is done it is advisable to "Square Up" the frame to ensure the cradle will not jam while raising or lowering</p> 
<p>→ REPEAT SAME ASSEMBLY PROCEDURE ON THE OPPOSITE SIDE VERTICAL SUPPORT</p>			
<p>→ REPEAT SAME ASSEMBLY PROCEDURE ON THE REAR SUPPORT</p>			

Comments or Notes:

# Instruction Sheet

Product  
**Vertical Lift**

Element Name:  
**Vertical Lift: Lower Brace Assembly**

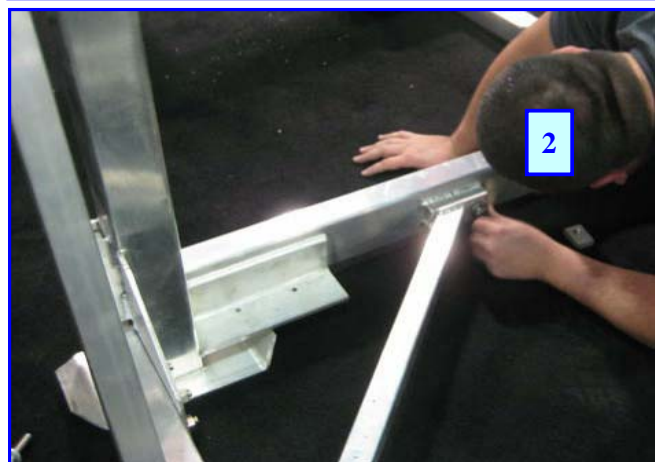
- Base
- With
- Less

Date Purchased: \_\_\_\_\_

Author: JBC

Size of lift: \_\_\_\_\_

Date Modified: March 10, 2011



#	What to do!	How to do it!	Why you do it!
1	Attach lower brace to lower front cross support	Align brace to hole in lower support and insert a 1/2" bolt and washer through support and brace and nyloc nut & washer	
2	Attach lower brace to lower side frame support	Align brace to hole in lower side frame support and insert a 1/2" bolt and washer through brace into slide nut	
3	Loosely secure front and side bolts	Use a 3/4" or 19 mm socket or wrench to tighten	<p><b>The supports should not be tightend at this point till all the braces are attached. Before final tightening is done it is advisable to "Square Up" the frame to ensure the cradle will not jam while raising or lowering</b></p>
	REPEAT SAME ASSEMBLY PROCEDURE ON THE OPPOSITE SIDE VERTICAL SUPPORT		
	REPEAT SAME ASSEMBLY PROCEDURE ON THE REAR SUPPORT		
		<p><b>IMPORTANT POINT!</b></p>	

Comments or Notes:

Left side shown –Right side similar

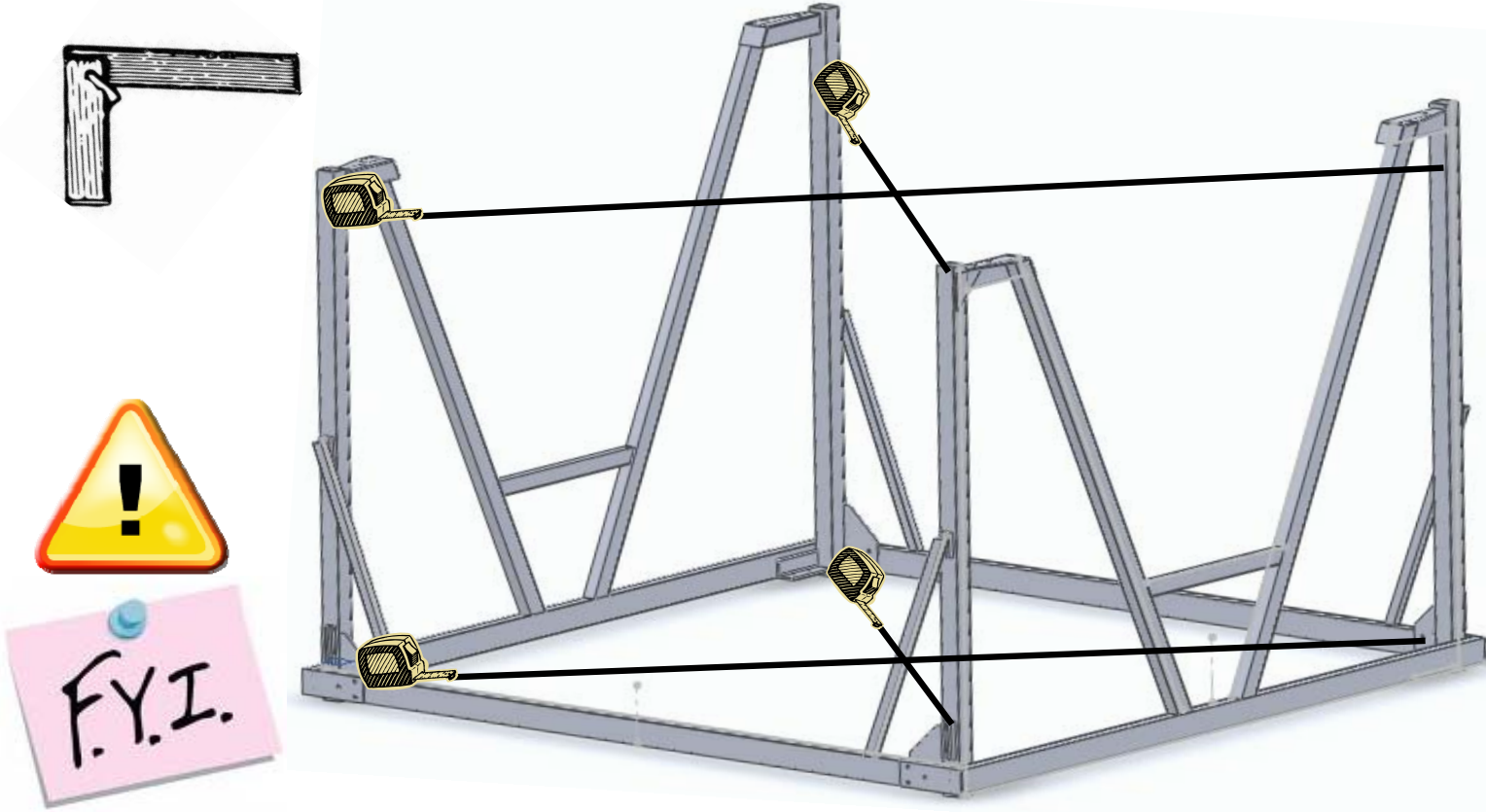
Front shown –Rear similar

Element Name:  
**Vertical Lift: Square Up Frame  
 Assembly Before Final Tightening**

- Base
- With
- Less

Date Purchased: \_\_\_\_\_  
 Size of Lift: \_\_\_\_\_

Author: JBC  
 Date Modified: March 10, 2011



**IT IS STRONGLY ADVISED TO CHECK THE ASSEMBLED FRAME FOR "SQUARE" FROM CORNER TO CORNER, BOTTOM AND TOP TO ENSURE THAT THE FRAME IS 100% SQUARE BEFORE TIGHTENING ALL THE SIDE FRAME, VERTICAL AND LOWER CROSS BRACES.**  
**IF NOT SQUARE, THE CRADLE MAY NOT FREELY RAISE OR LOWER OR COULD JAM**

# Instruction Sheet

Product  
**Vertical Lift**

Element Name:

**Vertical Lift: Front Cradle Assembly**

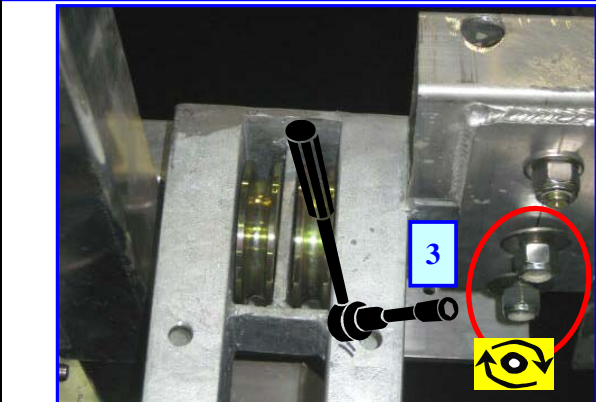
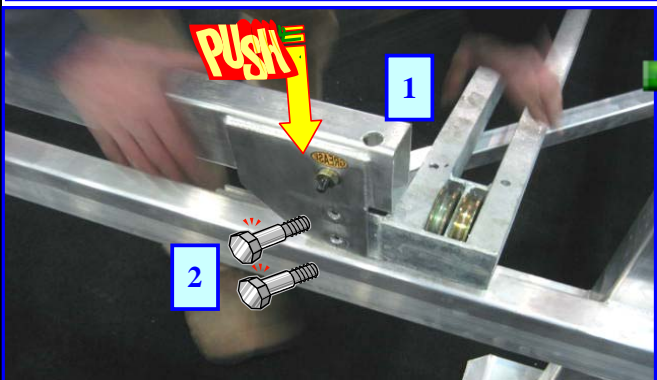
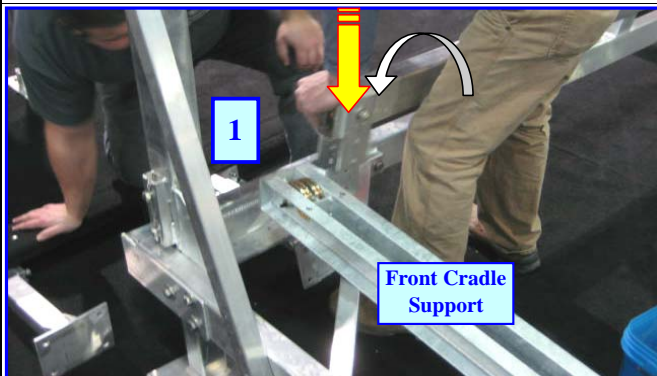
- Base
- With
- Less

Date Purchased: \_\_\_\_\_

Author: JBC

Size of lift: \_\_\_\_\_

Date Modified: March 10, 2011



#	What to do!	How to do it!	Why you do it!
1	Assemble front cradle lift support to cradle side cable supports	Lift the front cradle support (The one with the dual rollers) onto the main frame. Get the side cradle cable support and place onto the front cradle support as shown. Push down and align the holes in both supports	
2	Secure both supports	Using 1/2" bolts and washers, insert through outer side of support and push through.	
3	Install nuts and tighten	Get two 1/2" nyloc nuts and washers and tighten both bolts	
	<b>REPEAT SAME ASSEMBLY PROCEDURE ON THE OPPOSITE SIDE OF THE FRT CRADLE SUPPORT</b>		

Comments or Notes:

# Instruction Sheet

Product  
**Vertical Lift**

Element Name:

**Vertical Lift: Rear Cradle Assembly**

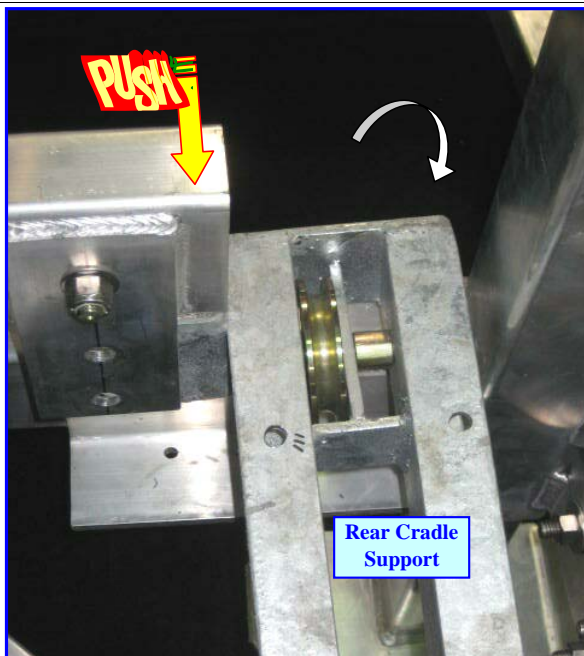
- Base
- With
- Less

Date Purchased: \_\_\_\_\_

Author: JBC

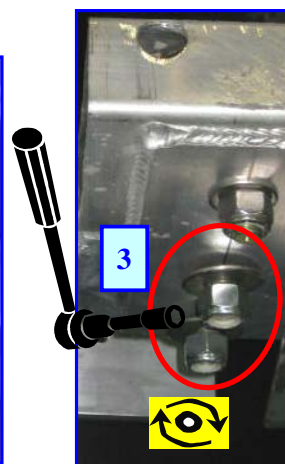
Size of lift: \_\_\_\_\_

Date Modified: March 10, 2011



#	What to do!	How to do it!	Why you do it!
1	Assemble rear cradle lift support to cradle side cable supports	Lift the rear cradle support (The one with the single rollers) onto the main frame. Get the side cradle cable support and place onto the rear cradle support as shown. Push down and align the holes in both supports	
2	Secure both supports	Using 1/2" bolts and washers, insert through outer side of support and push through.	
3	Install nuts and tighten	Get two 1/2" nyloc nuts and washers and tighten both bolts	

Comments or Notes:



Element Name:

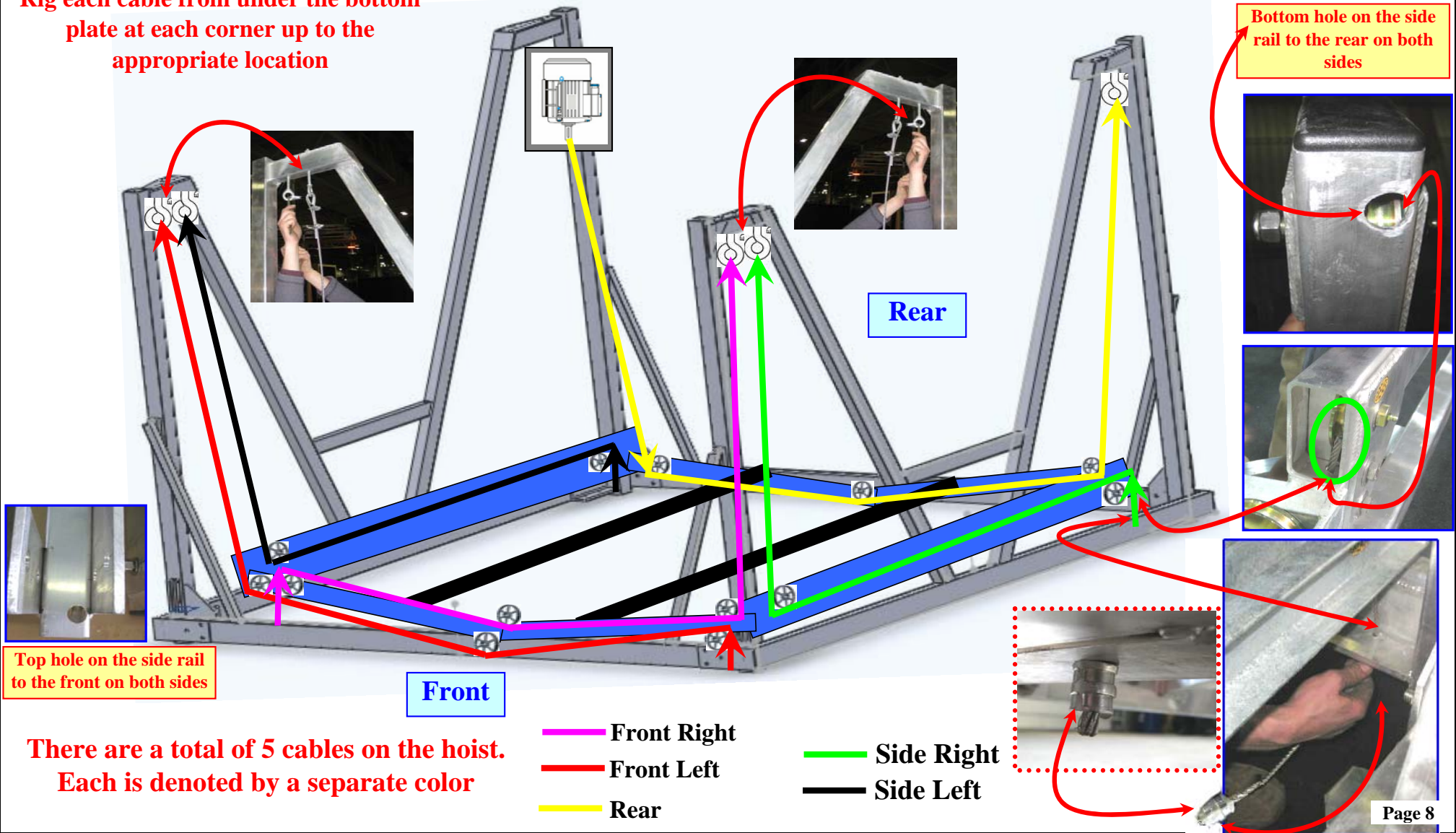
**Vertical Lift: Cable Rigging**

- Base
- With
- Less

Electric Motor    Date Purchased: \_\_\_\_\_  
 Size of Lift: \_\_\_\_\_

Author: JBC  
 Date Modified: March 10, 2011

**Rig each cable from under the bottom plate at each corner up to the appropriate location**



Top hole on the side rail to the front on both sides

Bottom hole on the side rail to the rear on both sides

**There are a total of 5 cables on the hoist. Each is denoted by a separate color**

- Front Right
- Front Left
- Rear
- Side Right
- Side Left



# Instruction Sheet

Product  
**Vertical Lift**

Element Name:

**Vertical Lift: Install Side Bunks**

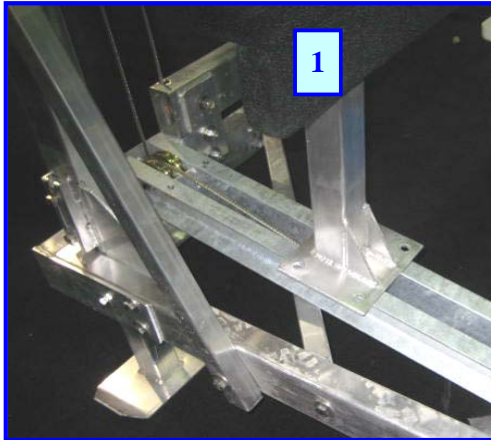
- Base
- With
- Less


Date Purchased: \_\_\_\_\_

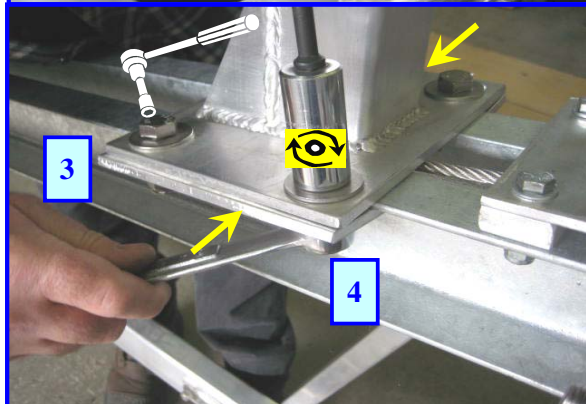
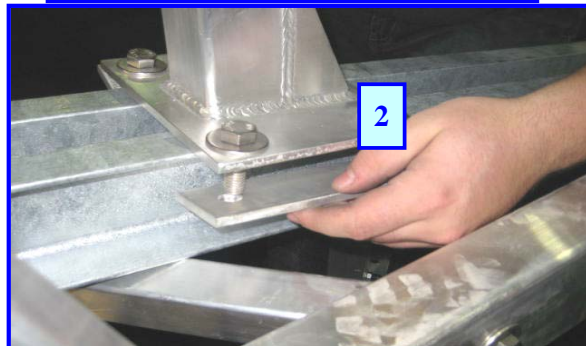
Author: JBC

Size of lift: \_\_\_\_\_

Date Modified: March 10, 2011



#	What to do!	How to do it!	Why you do it!
1	Install side bunk	Place outer bunk on front & rear cradle supports. Determine an approximate measurement that is required to fit boat	Adjustments can be after the bunks have been installed to the cradle
2	Place bolts and hold down plate to bunk secure plate	Place four 1/2" bolts and washers through top plate of bunk Get 2 hold down plates and place to the under side of the bunk plate	
3	Attach nuts to secure plate	Attach 4 nyloc nuts and washers to bolts.	
4	Secure bunk plate	Push the underside hold down plates under the cradle lip and secure with a 3/4" or 19 mm wrench	
 <b>REPEAT SAME ASSEMBLY PROCEDURE ON THE REAR SIDE BUNK SUPPORT</b>			



Comments or Notes:

# Instruction Sheet

Product  
**Vertical Lift**

Element Name:

**Vertical Lift: Install Center Bunks**

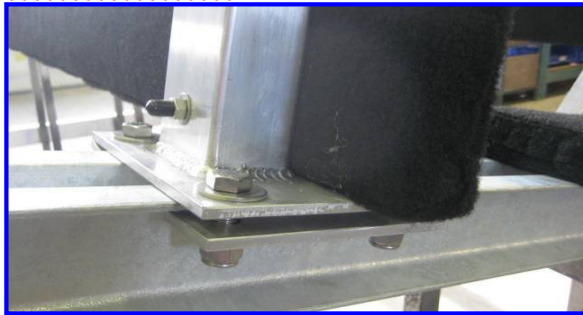
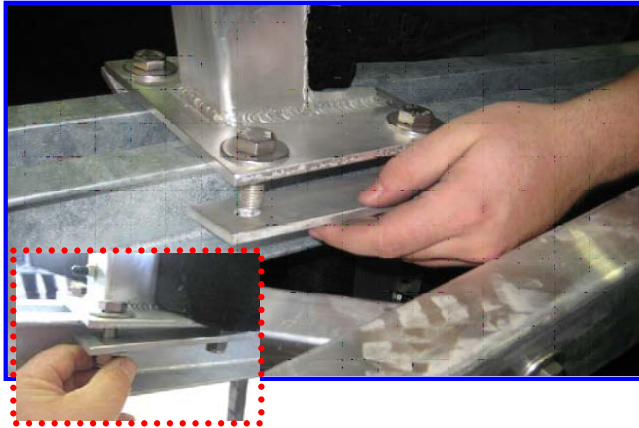
- Base
- With
- Less

Date Purchased: \_\_\_\_\_

Author: JBC

Size of lift: \_\_\_\_\_

Date Modified: March 10, 2011



#	What to do!	How to do it!	Why you do it!
1	Install Center bunks	Place bunk on end support cradle and place four 1/2" bolts and washers through top support plate. Place the hold-down plates under the front & rear edges of the cradle support, attach four 1/2" nyloc nuts and washers and secure	

Comments or Notes:

Element Name:  
**Vertical Lift: Adjust Bottom And Side Bunks**

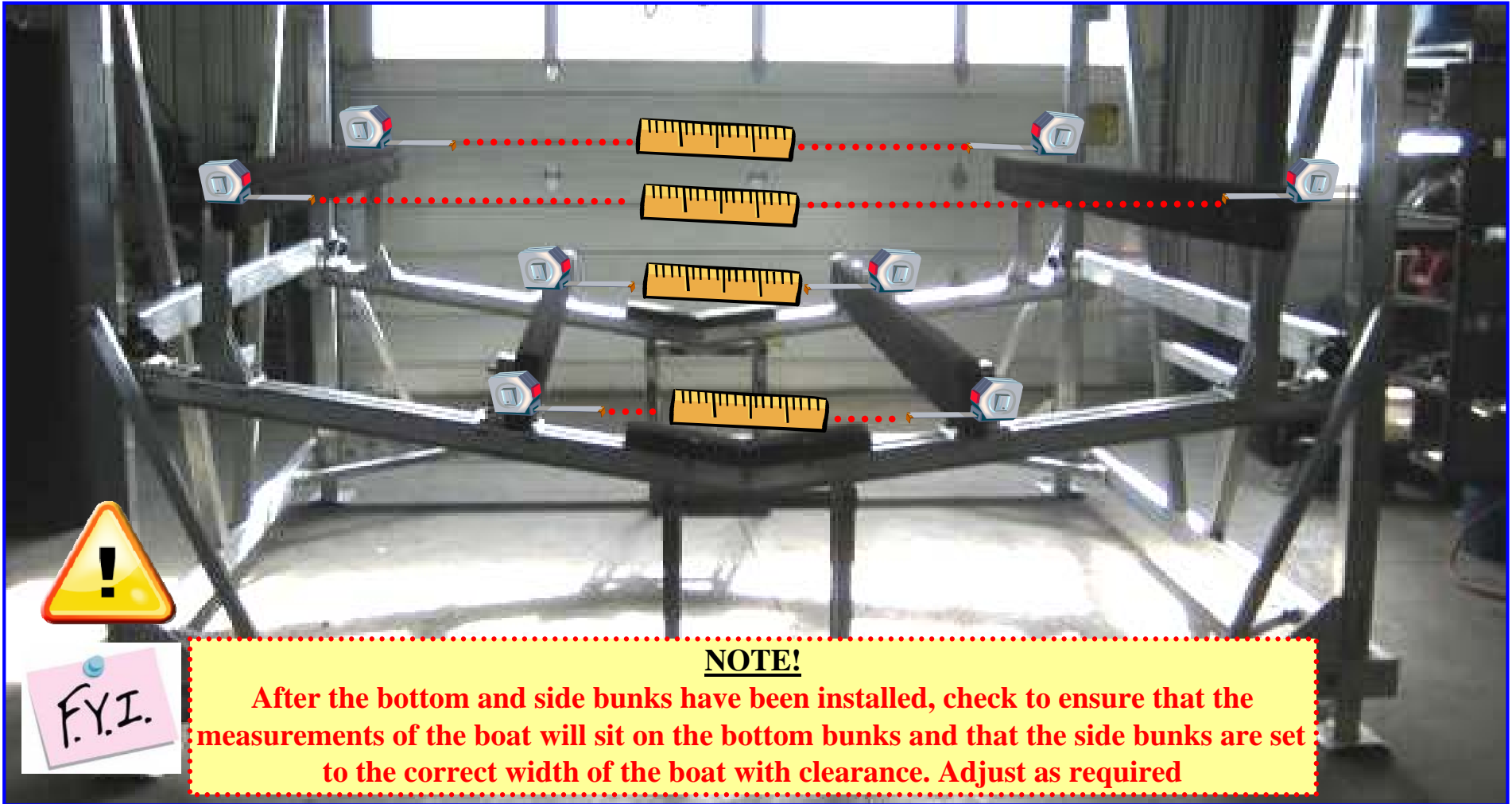
- Base
- With
- Less

Date Purchased: \_\_\_\_\_

Author: JBC

Size of lift: \_\_\_\_\_

Date Modified: March 10, 2011



NOTES AND COMMENTS:

Element Name:

**Vertical Lift: Level Cradle**

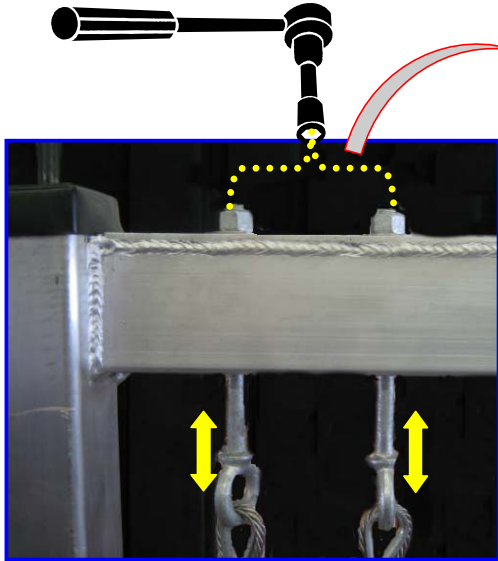
- Base
- With
- Less

Date Purchased: \_\_\_\_\_

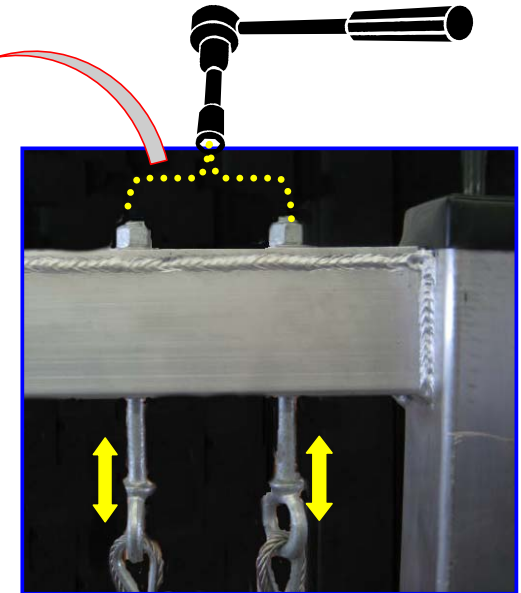
Size of lift: \_\_\_\_\_

Author: JBC

Date Modified: March 10, 2011



**After the bottom and side bunks have been installed, check the side to side level of the cradle to ensure that it is level from side to side. Adjust top eye bolts as required to achieve level**



NOTES AND COMMENTS:

# Instruction Sheet

Product  
**Vertical Lift**

Element Name:

**Vertical Lift: Install Guide Wheels**

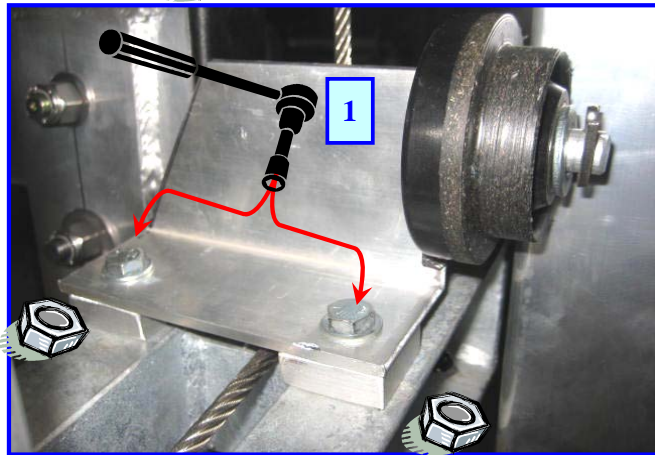
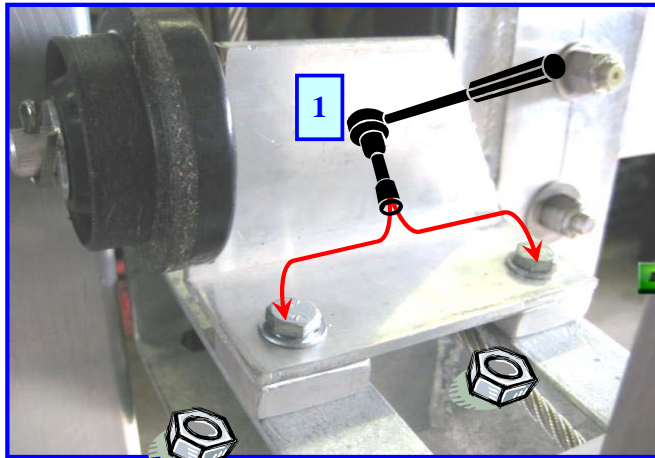
- Base
- With
- Less

Date Purchased: \_\_\_\_\_

Author: JBC

Size of lift: \_\_\_\_\_

Date Modified: March 10, 2011



Rear Shown-- Front Similar

#	What to do!	How to do it!	Why you do it!
1	Install cradle guide wheels to each side of the rear cradle support	Get the guide wheel, place to side of cradle with 2 square nuts under holder and cradle, insert 5/16" bolts through holder and through the cradle and secure with 2 nyloc nuts and washers. Tighten with a 5/16" wrench	The rollers ride the side frame to keep the cradle from swaying side to side or back and fourth
	<b>REPEAT SAME ASSEMBLY PROCEDURE ON THE FRONT CRADLE SUPPORT</b>		

Comments or Notes:

# Instruction Sheet

Product  
Vertical Lift

Element Name:

**Vertical Lift: Install Winch Pulley**

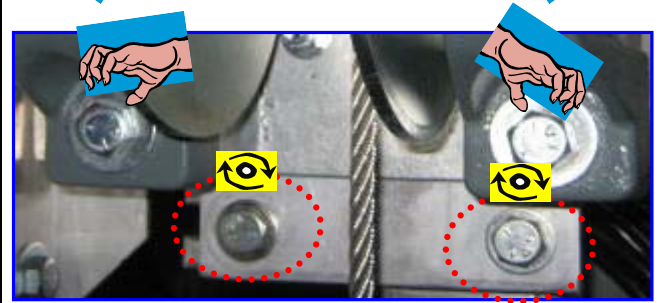
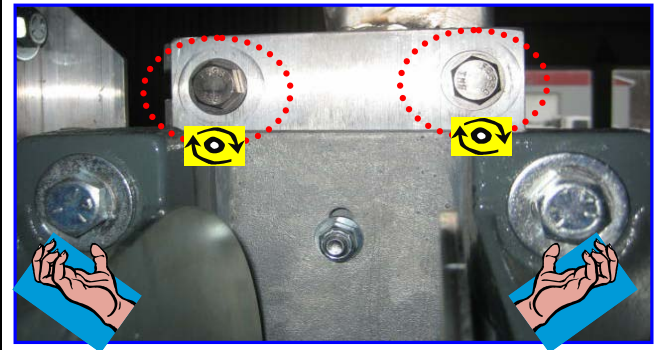
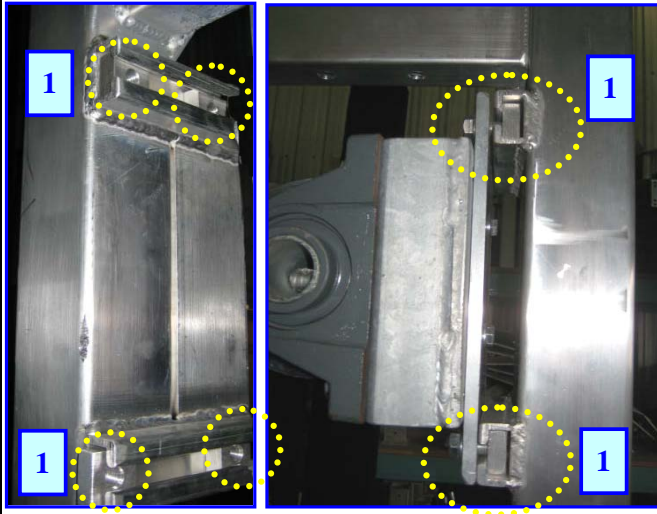
- Base
- With
- Less

Electric Motor Date Purchased: \_\_\_\_\_

Size of lift: \_\_\_\_\_

Author: JBC

Date Modified: March 10, 2011



#	What to do	How to do it	Why
1	Install pulley to frame	Insert 2 square nuts into the top and 2 into the bottom tracks at the rear of the lift side upright. Align the pulley base plate to the square nuts, and place four 1/2" bolts and washers to nuts. Do not tighten, just finger tight	The pulley must be slightly moveable for adjustments before tightening

Comments or Notes:

# Instruction Sheet

Product  
Vertical Lift

Element Name:

**Vertical Lift: Install Motor**

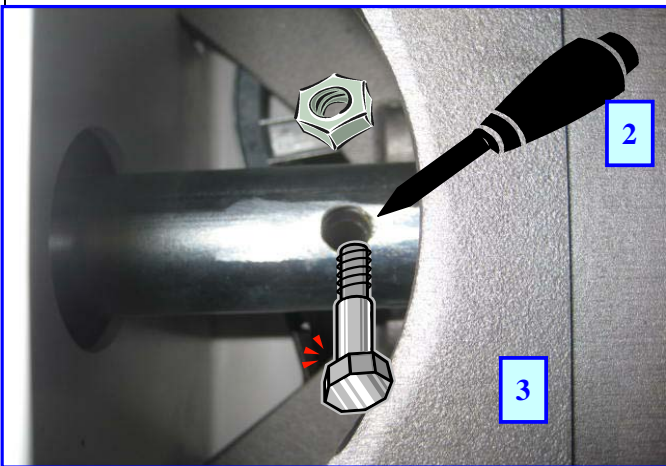
- Base
- With
- Less


Electric Motor Date Purchased: \_\_\_\_\_

Author: JBC

Size of lift: \_\_\_\_\_

Date Modified: March 10, 2011



#	What to do	How to do it	Why
	 <p><b>It is a good idea to remove the motor housing cover before installing the motor</b></p>		
1	Align pulley inner and outer shafts	Slide the center shaft to align the inner shaft hole with the outer shaft hole	Makes it easier to insert the bolt through both shafts after installing the motor
2	Install motor housing	Get the motor housing, align the pulley shaft to the motor shaft and slightly wiggle the motor housing to go over the pulley shaft and all holes line up. It may be a good idea to use an alignment bar to center all the holes	
3	Bolt pulley shaft to motor housing	Insert a 5/16" bolt and through the shaft and secure a nut to it.	
4	Tighten nut and bolt	It is advisable to use a long extension to tighten the bolt. Use a 1/2" socket	

Comments or Notes:



# Instruction Sheet

Product  
Vertical Lift

Element Name:  
**Vertical Lift: Install Anti Rotation  
 Brackets**

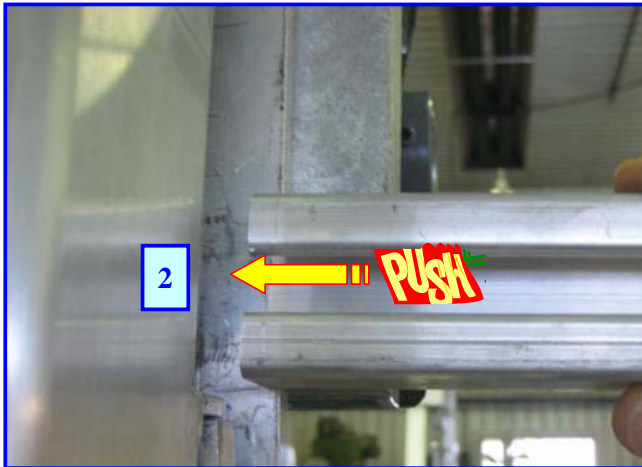
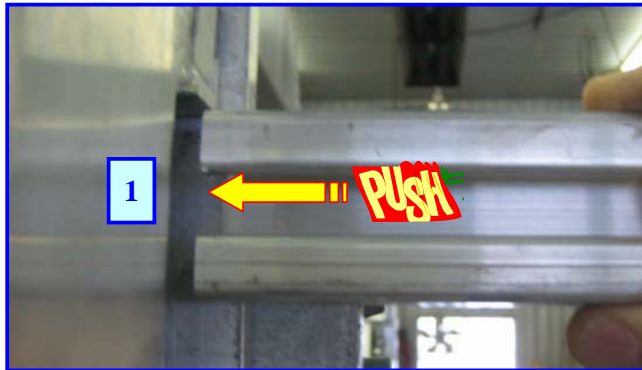
- Base
- With
- Less

Electric Motor Date Purchased: \_\_\_\_\_

Author: JBC

Size of lift: \_\_\_\_\_

Date Modified: **March 10, 2011**



#	What to do	How to do it	Why
1	Insert nut channel into top cavity behind pulley and the frame	Slide the channel between the pulley and the frame at the top	
2	Insert nut channel into bottom cavity behind pulley and the frame	Slide the channel between the pulley and the frame at the bottom	
3	Insert 1 square nut into each channel		





# Instruction Sheet

Product  
Vertical Lift

Element Name:  
**Vertical Lift: Install Motor Housing Secure Plate**

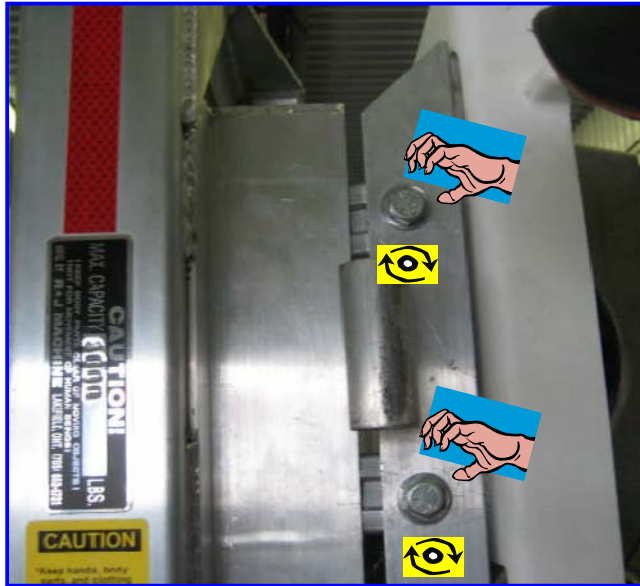
- Base
- With
- Less

Electric Motor Date Purchased: \_\_\_\_\_

Author: JBC

Size of lift: \_\_\_\_\_

Date Modified: **March 10, 2011**



#	What to do	How to do it	Why
1	Install motor housing secure plate	Get two 1/2" bolts and washers and the secure plate, align plate to the square nuts in the exposed channel and thread the bolts into the nuts. Tighten the bolts with a 3/4" or 19mm socket	The plate is required to secure the motor housing to to stop the housing from rotating when the motor is actuated
2	Tighten top pulley bolts	Use a 3/4" or 19mm socket and extension and tighten the 2 top pulley bolts	To tighten (Lock in) the 2 anti rotation brackets behind the pulley
3	Tighten bottom pulley bolts	Use a 3/4" or 19mm socket and extension and tighten the 2 bottom pulley bolts	

Comments or Notes:



# Instruction Sheet

Product  
Vertical Lift

Element Name:

**Vertical Lift: Secure Motor Housing**

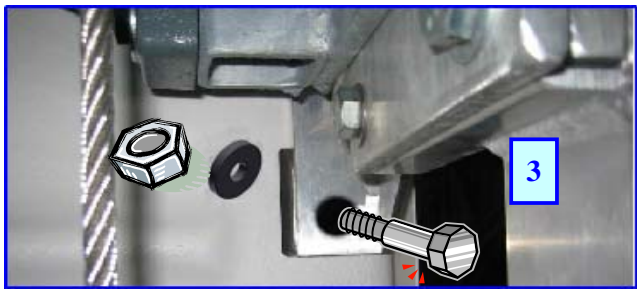
- Base
- With
- Less

Electric Motor Date Purchased: \_\_\_\_\_

Author: JBC

Size of lift: \_\_\_\_\_

Date Modified: March 10, 2011



#	What to do	How to do it	Why
1	Bolt motor housing to top of plate	Align the top housing hole to plate and place a 3/4" bolt and washer through plate into housing. Attach a nut and washer to the other side and finger tighten	Leave finger tight to allow for alignment of the lower hole
2	Bolt motor housing to bottom of plate	Align the bottom housing hole to plate and place a 3/4" bolt and washer through plate into housing. Attach a nut and washer to the other side and finger tighten	
3	Secure top housing bolt to plate	Using 3/4" or 19 mm sockets or wrenchs, hold nut and secure top bolt	
4	Secure bottom housing bolt to plate	Using 3/4" or 19 mm sockets or wrenchs, hold nut and secure top bolt	

Comments or Notes:

# Instruction Sheet

Product  
Vertical Lift

Element Name:

**Vertical Lift: Re-install Motor Cover**

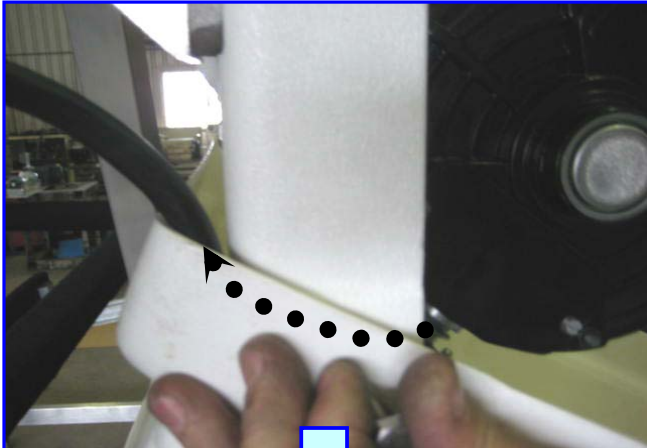
- Base
- With
- Less

Electric Motor    Date Purchased: \_\_\_\_\_

Author: JBC

Size of lift: \_\_\_\_\_

Date Modified: **March 10, 2011**



#	What to do	How to do it	Why
1	Secure motor cover on motor housing	Place housing to motor housing, ensure the cable exits out the back of the cover. Align the bottom holes, place bolts and nuts through both pieces and secure	To protect the motor from inclement weather

Comments or Notes:

