
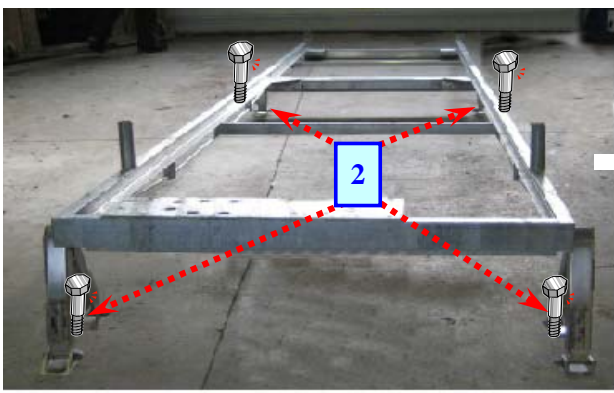
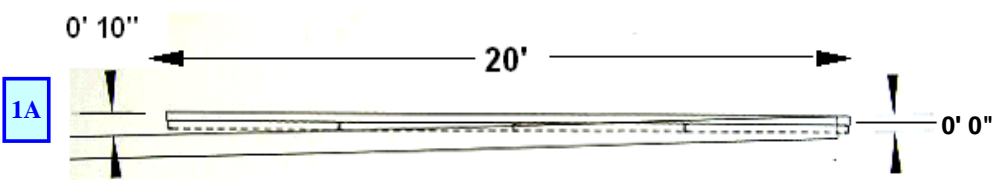


Instruction Sheet

Product
Marine Railway

Element Name: Installation Of Marine Railway Install "Nose Cone" Section	<input checked="" type="radio"/> Base <input type="radio"/> With <input type="radio"/> Less	Author: JBC Date Modified: March 10, 2011
---	---	--

#	What to do!	How to do it!	Why you do it!	Complete
1	Place nose cone to desired location	Set nose cone down on the ground where you will be securing it to. At this point decide what is required to properly slope the section so the carriage will freely roll. If legs are required, install the front (Lt & Rt) set and the rear leg set of the nose cone and raise as required to achieve the recomonded slope.	This slope is necessary and recommended to allow the carriage to be able to roll freely on the track	
1A		(A desired slope is calculated by having a 10" rise over a 20' span from front to back including one attached section of track)		
2	Secure nose cone section to base location	Bolt the front and rear legs or nose cone supports to the setting base	To keep the nose cone section secure when rolling the carriage on the track	



NOTES AND COMMENTS:

Page 1

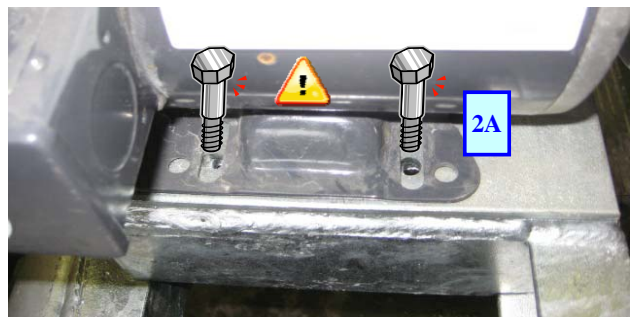
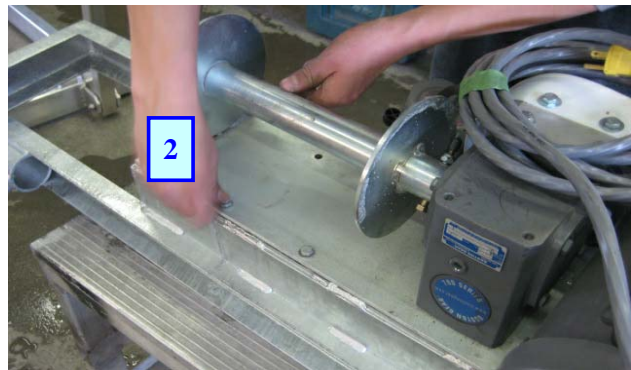
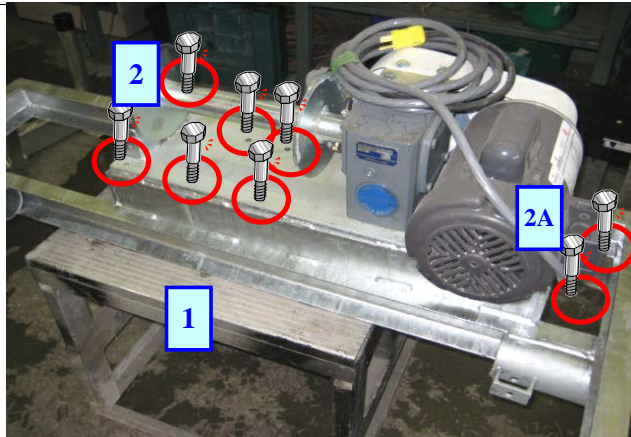
Instruction Sheet

Product
Marine Railway

Element Name:
Installation Of Marine Railway
"Nose Cone" Section - Motor Install

- Base
- With
- Less

Author: JBC
 Date Modified: March 10, 2011



#	What to do!	How to do it!	Why you do it!
1	Place motor assembly onto "Nose Cone" section	Set motor assembly on front of nose cone, align holes (8) on motor plate to base (Nose Cone)	To prepare for securing the motor assembly to nose cone
2	Place bolts into the motor base and secure to nose cone. (Use 3/8" bolts) (9/16" or 14 mm wrench)	Attach the nuts under base plate to all bolts and tighten.	
2A	It may be necessary to remove the 2 motor mounting bolts before attaching to nose cone (5/16" bolts)(1/2" or 13mm wrench)	Remove and re-install when plate is on nose cone	These bolts are holding the motor to the plate for transporting. They must be re-installed to base

NOTES AND COMMENTS:

Element Name:

Boat Carriage Installation

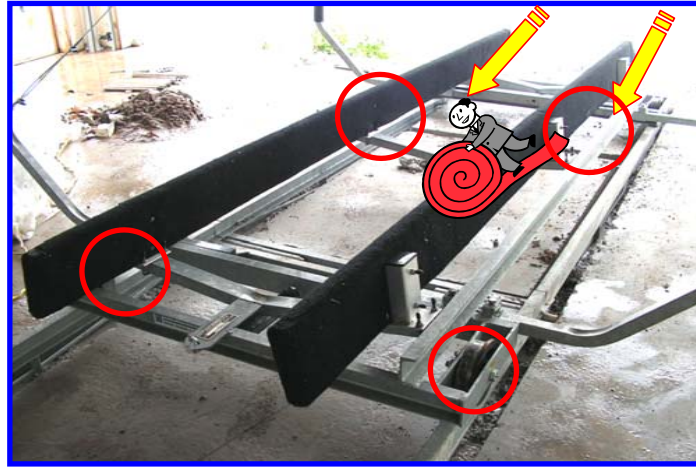
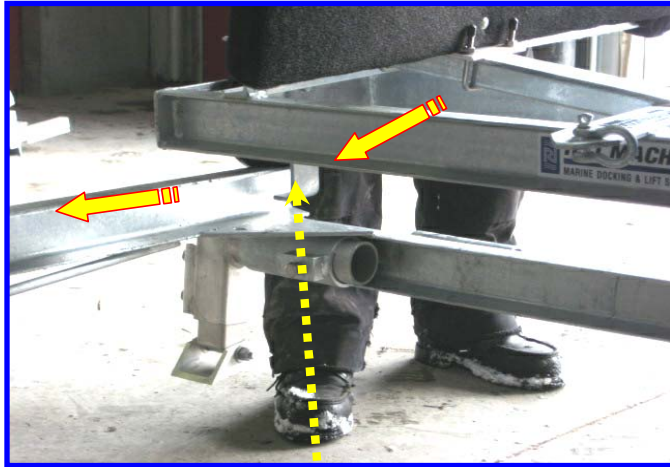
- Base
- With
- Less

Date Purchased: _____

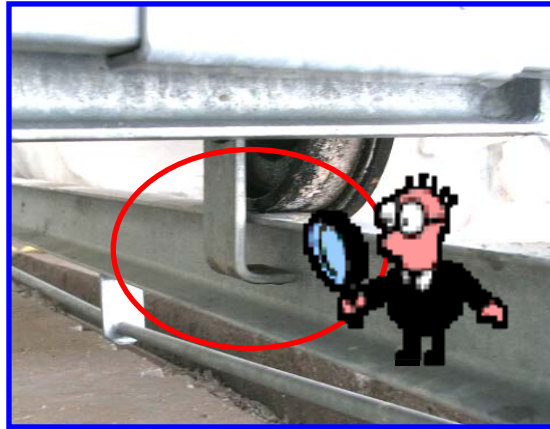
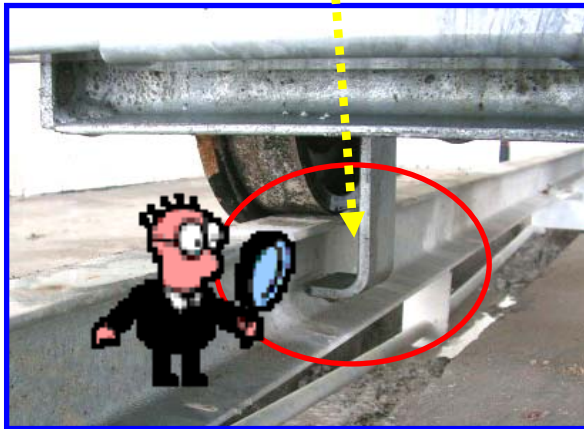
Size of Railway: _____

Author: JBC

Date Modified: March 10, 2011



The recommended method to place / install the carriage onto the track is to roll it onto the first "Nose" piece, making sure that the outside shoulder edge of the wheels are on the outside of the track as shown and the guides are on the inside of the track. This is to ensure that the carriage stays on the railway track when rolling to load or un-load the boat



NOTES AND COMMENTS:

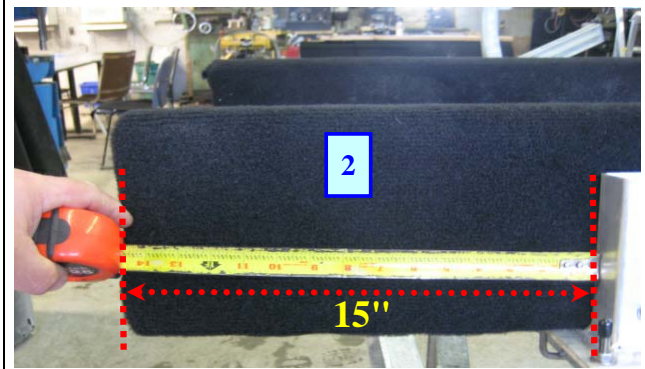
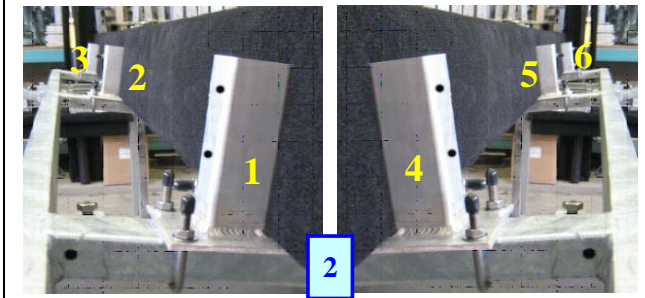
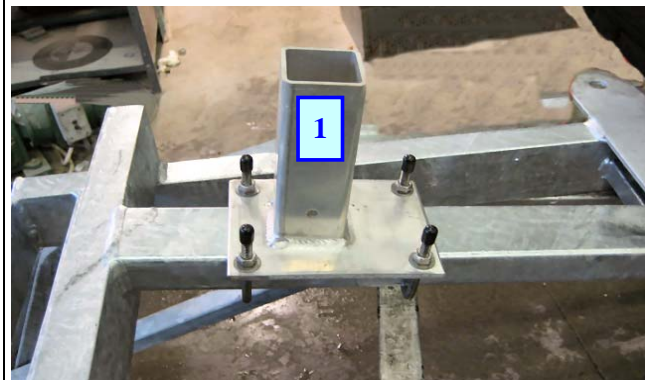
Instruction Sheet

Product
Marine Railway

Element Name:
**Installation Of Marine Railway
"Carriage" Section - Install Bunks**

- Base
- With
- Less

Author: JBC
Date Modified: March 10, 2011



#	What to do!	How to do it!	Why you do it!
1	Attach 6 bunk secure brackets to carriage	Place to top of cross pieces, attach the 2 "U" clamps to bracket, attach nuts and secure. Place all brackets equal distance from center on both sides of the cradle on all 3 crossers	
2	Place bunks to the inside of the brackets and measure for correct placement	Adjust the bunks equally on both sides and measure 15" from the front bunk supports	Recommended bunk placement to properly support the boat on the cradle

NOTES AND COMMENTS:

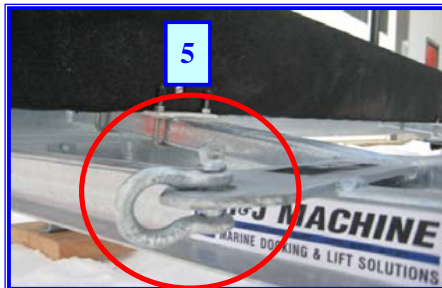
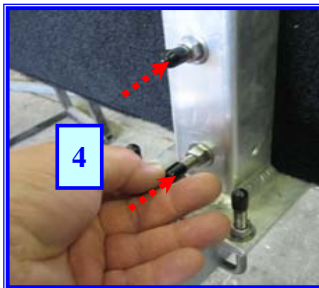
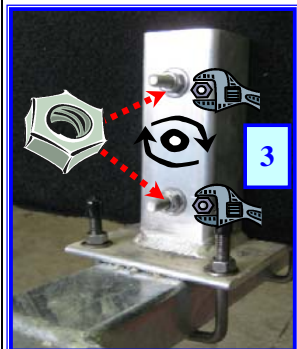
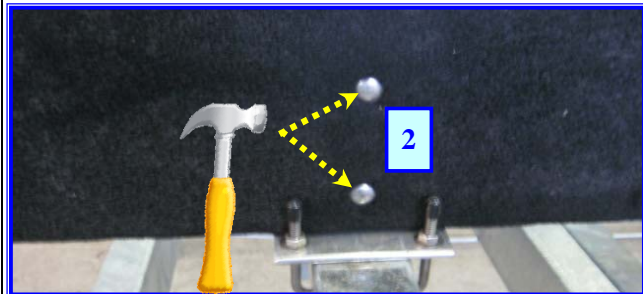
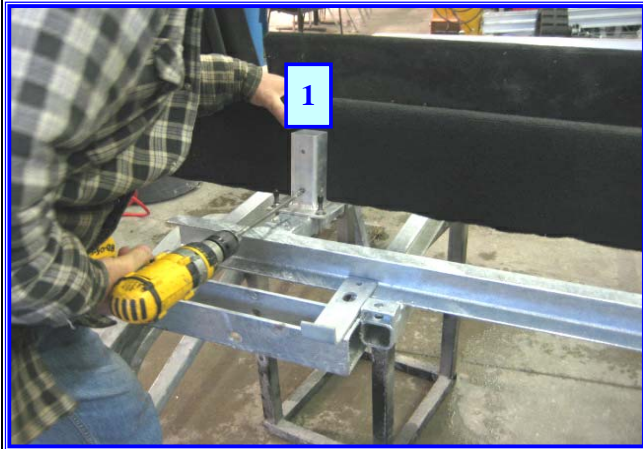
NOTE: When you purchase a new railway the bunks will already be installed on the carriage. These instructions are for reference if they need to be removed or replaced

Instruction Sheet

Element Name:
**Installation Of Marine Railway
 "Carriage" Section - Secure Bunks**

- Base
- With
- Less

Author: JBC
 Date Modified: March 10, 2011



#	What to do!	How to do it!	Why you do it!
1	Drill top and bottom holes through bracket and bunk on all supports	Support the bunk along the bracket and drill 2 holes through the bracket and the bunk.	
2	Insert 2 carriage bolts through bunk and bracket	It may be necessary to use a hammer to fully insert the bolts all the way through the support and the bunk	
3	Place nuts and washer on bolt and tighten securely.	Do not over tighten or you may distort or weaken the upright or split the bunk	
4	Push protective caps over ends of bolts	Push over the end of the exposed bolt	For personal protection and boat protection
Repeat on all 6 brackets			
5	Install shackle to front of nose cone	Place shackle to front of carriage extension and secure with bolt	Required for winch cable to attach to for moving the carriage on the track

NOTES AND COMMENTS:

Instruction Sheet

Product
Marine Railway

Element Name:

Install Frt. & Rr. Carriage Uprights

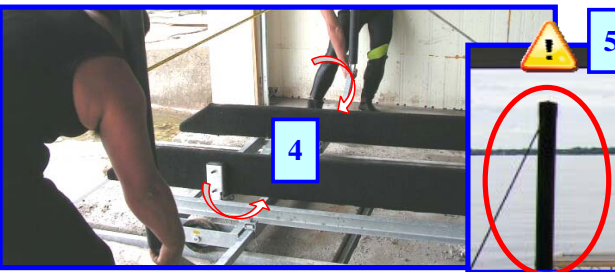
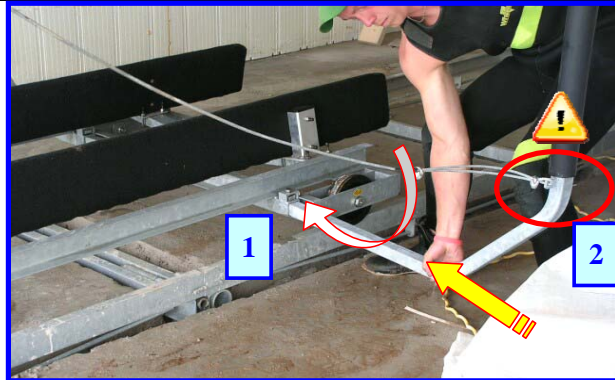
- Base
- With
- Less

Date Purchased: _____

Author: JBC

Size of Railway: _____

Date Modified: March 10, 2011



#	What to do!	How to do it!	Why you do it!	Completed
1	Install uprights to carriage (LEFT AND RIGHT SIDES)	Get and slide front upright into carriage retainer bracket. The attached cable must be low on the upright as shown	Uprights required to guide the boat onto the carrier in the water	
2	Make sure the cable is on the <u>BOTTOM</u> of the <u>FRONT</u> uprights		The cable is needed to support the upright when the boat is tied to the upright when rolling the boat out of the water	
3	Push the upright into bracket holder. (DO NOT TIGHTEN BOLT YET)	Make sure the secure bolts are loose enough for the upright to side in!		
4	Install rear uprights to carriage (LEFT AND RIGHT SIDES)			
5	Make sure the cable is on the <u>TOP</u> of the <u>REAR</u> uprights and slide the covers over all 4 posts		The cable is needed to support the upright when the boat is tied to the upright when rolling the boat out of the water. Covers are for protection in case of contact	

Comments or Notes:

NOTE: When you purchase a new railway the uprights will already be installed on the carriage. These instructions are for reference if they need to be removed or replaced

Instruction Sheet

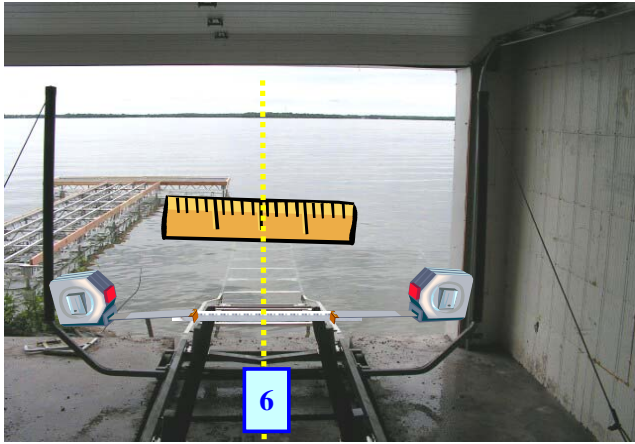
Product
Marine Railway

Element Name:
Install Frt. & Rr. Carriage Uprights

- Base
- With
- Less

Date Purchased: _____
 Size of Railway: _____

Author: JBC
 Date Modified: March 10, 2011



#	What to do!	How to do it!	Why you do it!	Completed
6	Adjust Uprights (Front & Rear)	Measure the boat that you are going to put on the carriage at its WIDEST POINT . Transfer the measurement & ADD a couple of inches for each side for clearance. Slide the uprights equally out or in as required to achieve the desired distance between the uprights. Ensure that each upright is of equal distance from the center of the carriage		

Comments or Notes:

Instruction Sheet

Product
Marine Railway

Element Name:
Initial Installation Of Marine Railway (1)

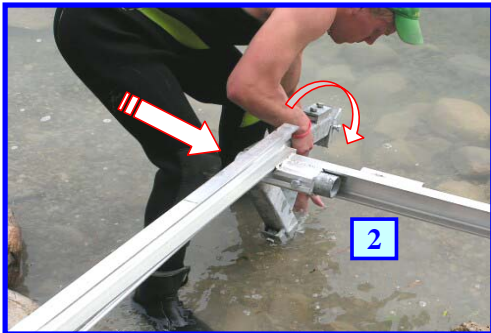
- Base
- With
- Less

Date Purchased: _____

Author: JBC

Size of Railway: _____

Date Modified: **March 10, 2011**



#	What to do!	How to do it!	Why you do it!	Completed
1	Place 1st piece of rail track to the nose cone section. (The nose cone is the term used for the first piece of track that the winching system either electric or manual is affixed to)	Get 1st section of railway and place to the permanently secured nose cone section. Align the section to the guides and slide the joiner pins to secure the 2 pieces of track	This is the first piece of track!	
2	Set Support Leg to rail	Place leg support into the leg holder at the end of the track. Slide in and pivot so both legs are on the ground (If required)	Necessary to level and adjust the track	
3	Tighten leg assembly to track	Use a 3/4 inch (or 19mm) socket or wrench. Secure tightly	To secure the leg assembly to the track	

Repeat same sequence on opposite side of track

NOTES AND COMMENTS:

Instruction Sheet

Product
Marine Railway

Element Name:
Initial Installation Of Marine Railway (2)

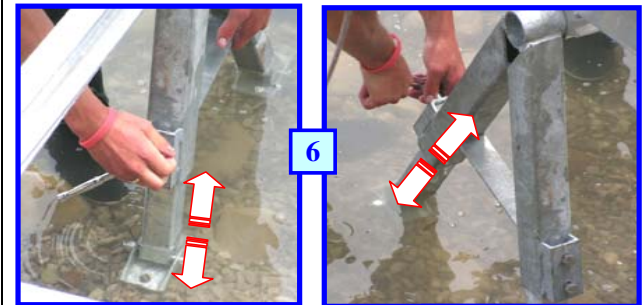
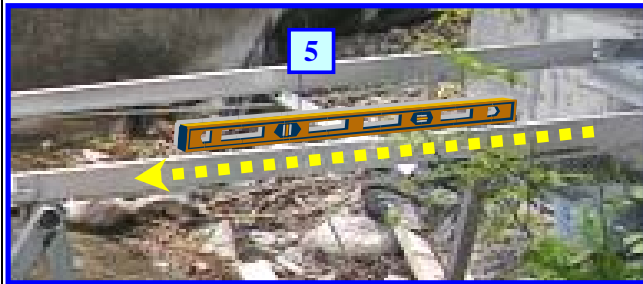
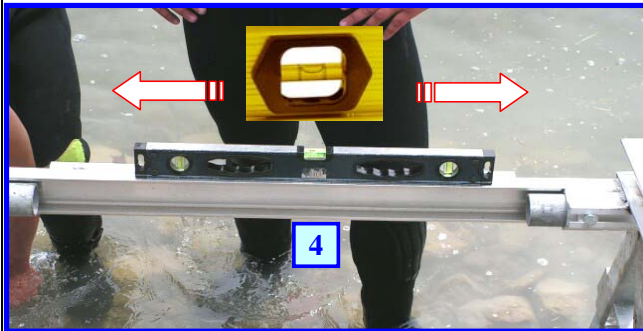
- Base
- With
- Less

Date Purchased: _____

Author: JBC

Size of Railway: _____

Date Modified: **March 10, 2011**



Front Leg

Rear Leg

#	What to do!	How to do it!	Why you do it!	Completed
4	Check for side to side level	Place level on the back of the track and check for level	The track must be level for the cradle to travel properly	
5	Check for slope	There must be a SLIGHT downward slope from the main track	To allow the cradle and boat to freely slide down the track into the water	
6	Adjust legs	Use a 3/4 inch (or 19mm) socket or wrench. Loosen front and rear secure leg bolts and raise or lower to obtain the proper side to side level and the proper slope. After completion, re-check the tracks to ensure proper level has been maintained	Proper level and slope must be achieved to allow the boat on the cradle to roll freely on the track into and out of the water	

NOTES AND COMMENTS:

Instruction Sheet

Product
Marine Railway

Element Name:

Initial Installation Of Marine Railway (3)

- Base
- With
- Less

Date Purchased: _____

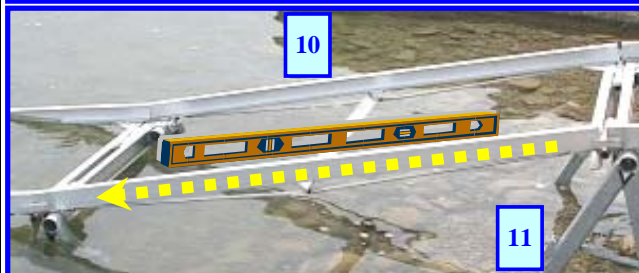
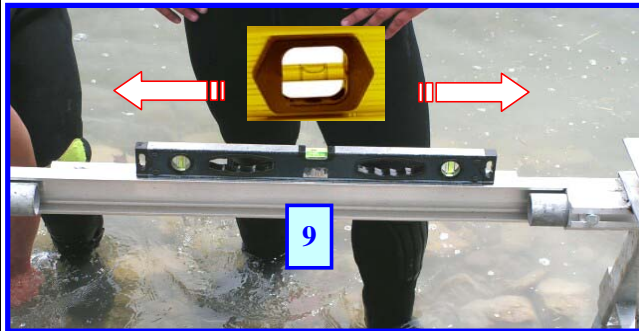
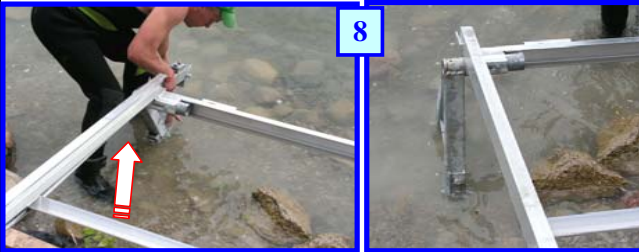
Author: JBC

Size of Railway: _____

Date Modified: **March 10, 2011**

#	What to do!	How to do it!	Why you do it!	Completed
7	Install next section of track	Place joiner pins into track, align with previous track and push in to secure. Tap into place with a hammer if necessary	To secure track to previous track section	
8	Attach legs to section (If required)	Install legs to the next section if required to achieve the proper level and slope. (See element #2 & 3 for leg installation)	To allow the cradle and boat to freely slide down the track into the water	
9	Check for side to side level	Same procedure as in previous instruction #4		
10	Check for slope	Same procedure as in previous instruction #5		
11	Adjust legs	Same procedure as in previous instruction #6		

NOTES AND COMMENTS:





Instruction Sheet

Element Name:
Initial Installation Of Marine Railway (4)

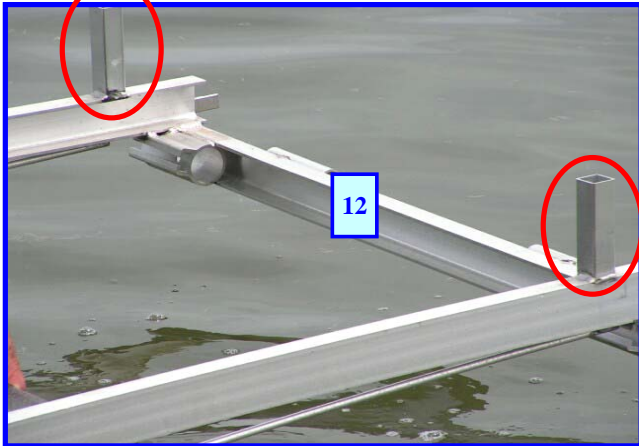
- Base
- With
- Less

Date Purchased: _____

Author: JBC

Size of Railway: _____

Date Modified: **March 10, 2011**



#	What to do!	How to do it!	Why you do it!	Completed
12	Install end section of track	Place joiner pins into track, align with previous track and push in to secure. Tap into place with a hammer if necessary. If not using the legs, adjust with cement slabs as required to maintain a slope	To secure track to previous section and allow the cradle to stop at the end of the track	
	(NOTE: The end piece of track has the upright pieces ON THE END . This final section must be in the proper location as the upright "Stops" are what prevents the cradle from coming off the track when you are launching your boat off the cradle)			

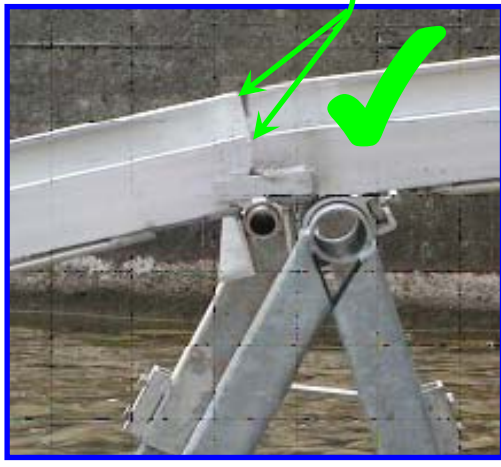
NOTES AND COMMENTS:

Element Name:
Marine Railway Final Set-up (1)

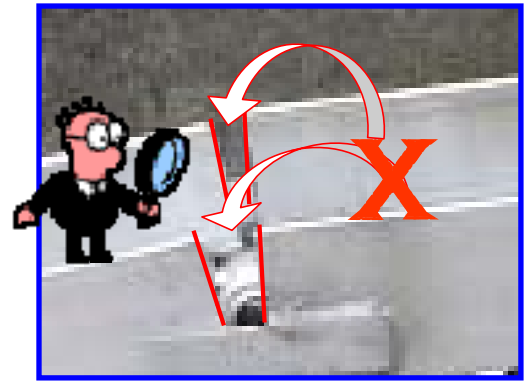
- Base
- With
- Less

Date Purchased: _____
 Size of Railway: _____

Author: JBC
 Date Modified: March 10, 2011



It is very important when assembling the sections to keep the track joints as close together as possible. Too wide a gap can result in the boat cradle getting stuck in or on any of the joints. It must have a SMOOTH and GENTLE slope entering the water



NOTES AND COMMENTS:

Element Name:
Marine Railway Final Set-up (2)

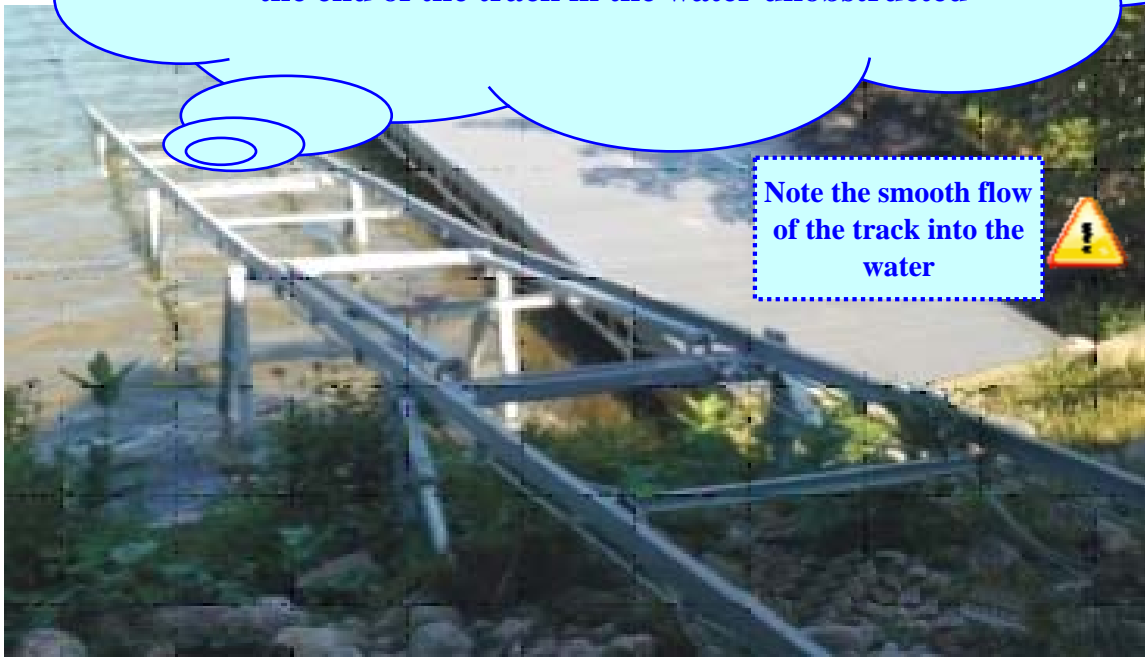
- Base
- With
- Less

Date Purchased: _____
 Size of Railway: _____

Author: JBC
 Date Modified: March 10, 2011

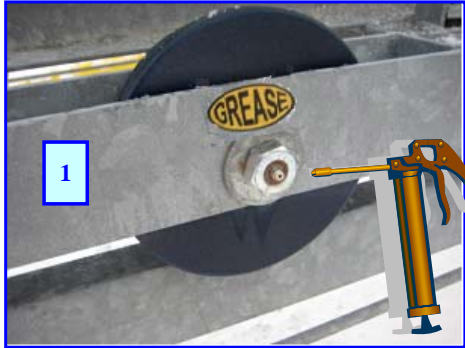
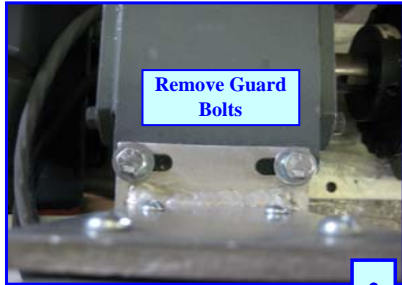

Depending on the depth of the water when installing the railway, it may be necessary to place the track sections on cement slabs of varying thickness instead of the leveler legs to continue the appropriate slope & level required for the boat and cradle to glide to the end of the track in the water unobstructed

Note the smooth flow of the track into the water



NOTES AND COMMENTS:

Trouble Shooting Guide - Marine Railway

NUM	Problem	Possible resolution	Diagram: (Description, Tools, Special Parts, LayoutS, etc.)
1	Carriage does not roll or is very stiff while moving	<p>Check wheels for rust, dirt or debris stuck or embedded in any of the wheels. Clean or remove as required.</p> <p>Wheels may need greasing. <i>The wheels should be greased at least twice a year.</i> Each wheel has a grease fitting on the end of the wheel bolt</p>	
2	Motor is noisy when operated	Remove the belt guard and check pulleys for tightness. Use a 3/16" allen key to tighten	
3	Motor is turning but the roller is not moving	Check that the belt (Belts) are on and tight. If belt is broken, replace or tighten if loose	
4	Shaft is noisy or stiff	Grease the 2 shaft pulley bearings	