

Instruction Sheet

Product

Decking: For EON & Aluminum Decking
Only On Truss Style Docks

Element Name:
Installing Deck Sections To Dock Frame (& Removing)

- Base
- With
- Less

Date Purchased: _____

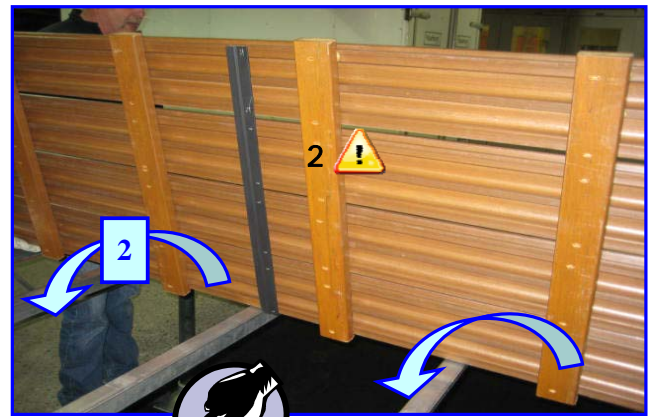
Author: JBC

Size of Dock: _____

Date Modified: March 10, 2011



#	What to do!	How to do it!	Why you do it!	Completed
1	Identify proper orientation (Direction) to lay sections on dock	The deck sections go on from the back of the dock forward. There is a locking strip on the underside of the sections.	These are used to lock the deck sections onto the actual frame to prevent them from moving while placed on the dock	
2	Place Sections to dock frame	Lay the section on top of the dock frame and set down with the lock strip to the side of the "L" channel on the dock		



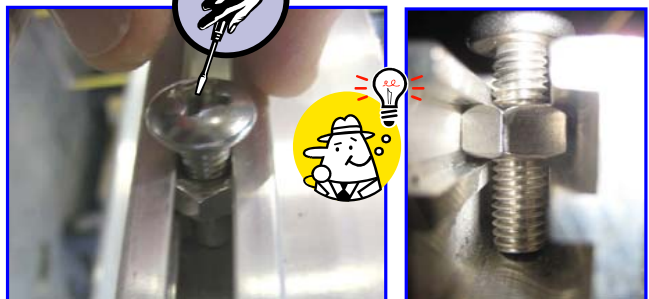
When Removing the Deck Sections & Before Lifting For Storage



IT IS A GOOD IDEA WHEN INSTALLING OR REMOVING THE DECK SECTIONS FOR THE FIRST TIME TO NUMBER OR IDENTIFY EACH SECTION AS YOU ARE REMOVING IT SO THAT EACH SECTION WILL BE RE-INSTALLED INTO THE SAME EXACT LOCATION THAT IT ORIGINALLY WAS PLACED!



AFTER REMOVING THE TRIM STRIPS, IT IS RECOMMENDED TO REPLACE ALL THE SCREWS BACK INTO THE NUTS IN THE CHANNEL AND SLIGHTLY TIGHTEN. THIS WILL PREVENT THE NUTS FROM SLIDING DOWN THE CHANNEL WHILE LIFTING



Comments or Notes:

Instruction Sheet

Product

Decking: For EON & Aluminum Decking
Only On Truss Style Docks

Element Name:
Installing Deck Sections To Dock Frame
(Con't)

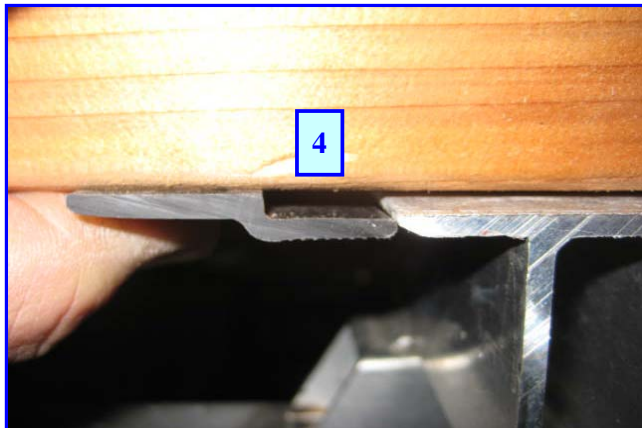
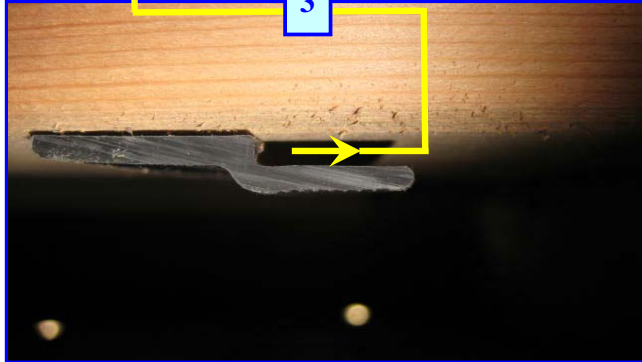
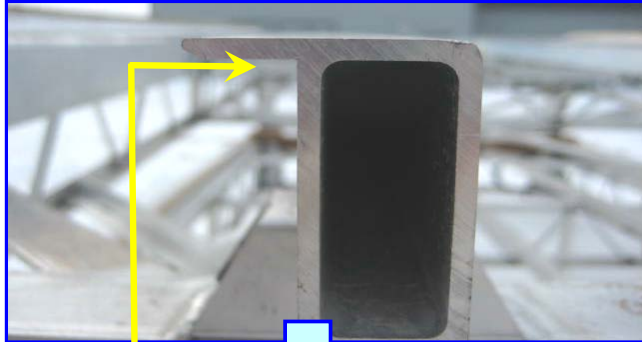
- Base
- With
- Less

Date Purchased: _____

Author: JBC

Size of Dock: _____

Date Modified: **March 10, 2011**



#	What to do!	How to do it!	Why you do it!	Completed
3	Strip under deck section fits under dock frame channel	Refer to pictures for orientation		
4	Place deck to edge of "L" channel	Align the deck section on the dock frame on the edge of the channel		

Comments or Notes:

Instruction Sheet

Product

Decking: For EON & Aluminum Decking
Only On Truss Style Docks

Element Name:
Installing Deck Sections To Dock Frame
(Con't)

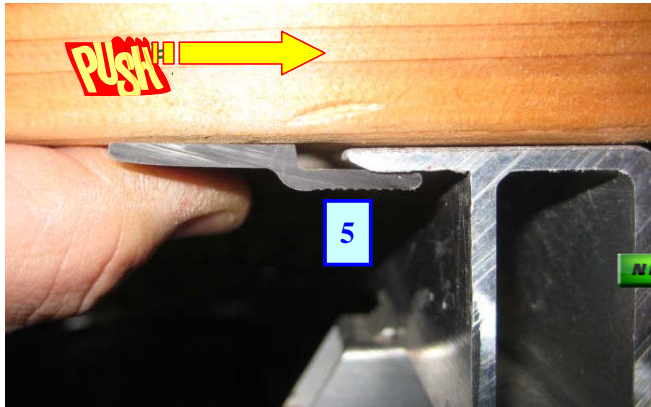
- Base
- With
- Less

Date Purchased: _____

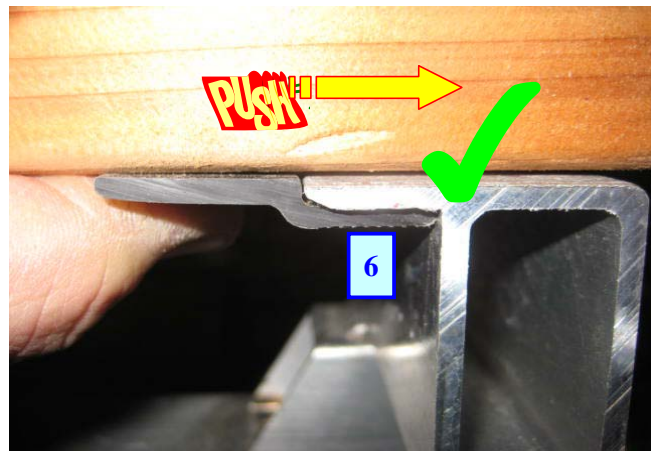
Author: JBC

Size of Dock: _____

Date Modified: **March 10, 2011**



#	What to do!	How to do it!	Why you do it!	Completed
5	Lock decking section into dock frame	Slide the section sideways pushing down slightly to lock the strip under the lip of the "L" channel		
6	Fully locked under "L" channel			
<p>REPEAT THE SAME PROCESS TO THE OTHER SECTIONS OF DECK TILL ALL SECTIONS ARE ATTACHED</p>		<p>ENSURE ALL SECTIONS ARE TIGHT TOGETHER WITH THE PREVIOUS SECTION; AND STRIPS LOCKED</p>	<p>TO PREVENT PERSONAL INJURY</p>	



Comments or Notes:

Instruction Sheet

Product

Decking: All Decking

Element Name:

Decking: Install Top Hold Down Trim Strips

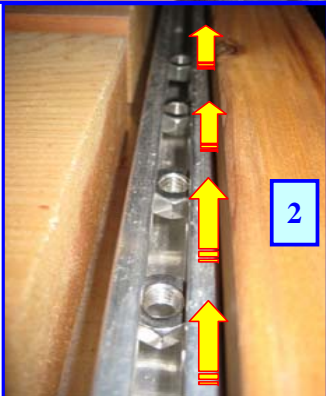
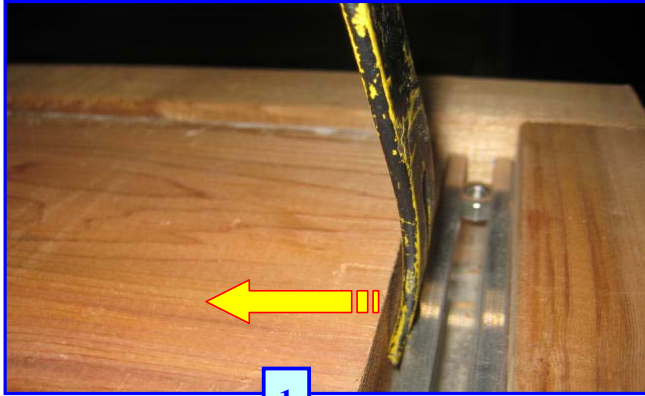
- Base
- With
- Less

Date Purchased: _____

Author: JBC

Size of Dock: _____

Date Modified: March 10, 2011



#	What to do!	How to do it!	Why you do it!	Completed
1	Adjust deck boards	Use a pry bar if necessary to slightly slide the deck boards from the edge of the hold down channel	To allow the top trim plate to be placed beside the channel for secure	
2	Locate nuts in channel	Slide nuts in the channel to the approximate secure location to line up with the trim piece		

Comments or Notes:

Instruction Sheet

Product

Decking: All Decking

Element Name:

Decking: Install Top Hold Down Trim Strips (Con't)

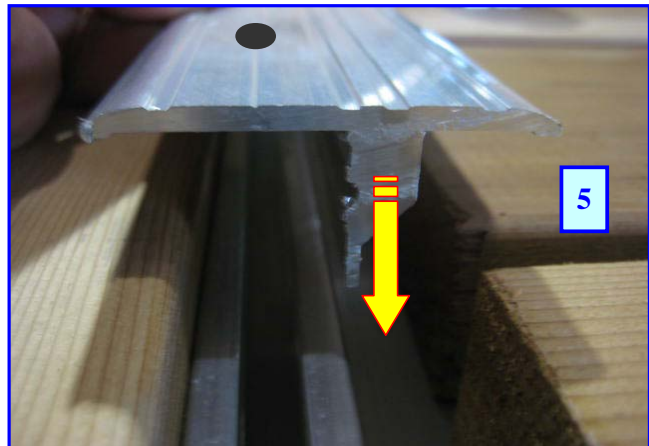
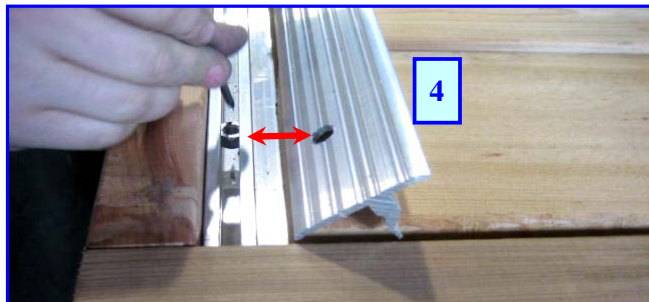
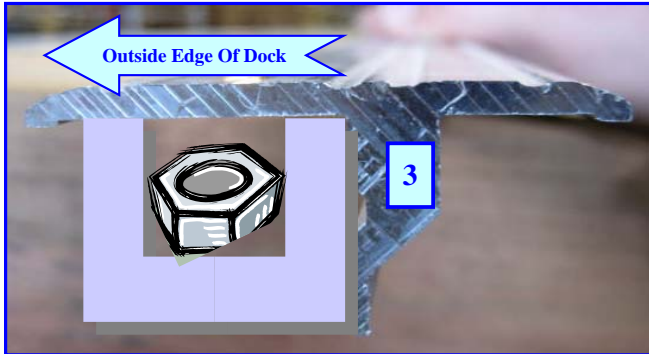
- Base
- With
- Less

Date Purchased: _____

Author: JBC

Size of Dock: _____

Date Modified: March 10, 2011



#	What to do!	How to do it!	Why you do it!	Completed
3	Proper placement (Sides) of the top trim strips	The top strip must be placed so the longer side of the strip is to the outside of the dock and the flat side of the bottom piece will butt up to the inside of the base lock channel		
4	Align trim to nut	Set the trim strip on deck boards and line up (Slide) the nuts to the holes in the strip to be attached	Easier to align before placing strip into dock	
5	Place trim section to deck	Place trim section into the opening and butt up to end of deck or a previously installed piece of trim		

Comments or Notes:

Instruction Sheet

Product

Decking: All Decking

Element Name:

Decking: Install Top Hold Down Trim Strips (Con't)

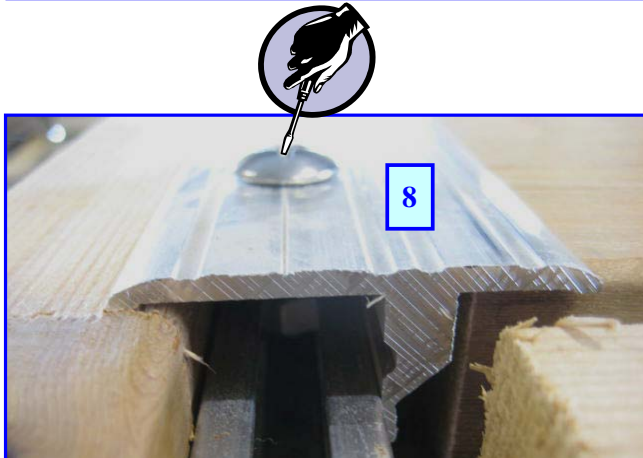
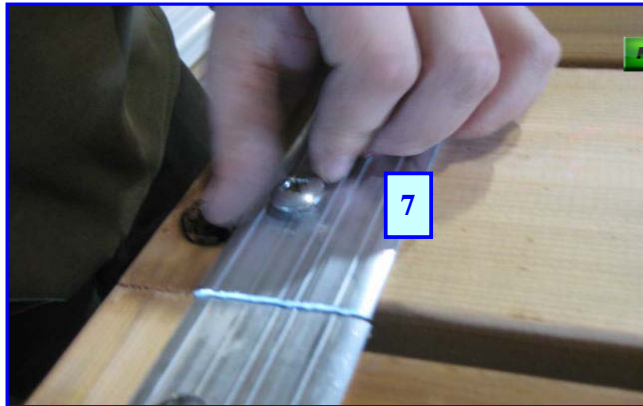
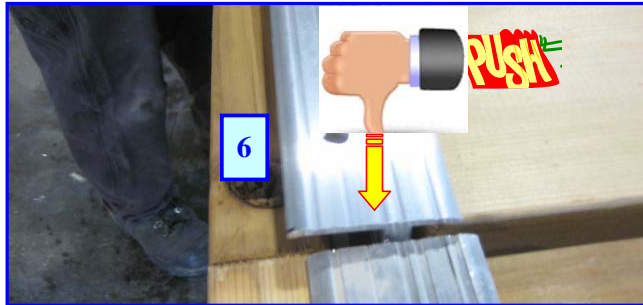
- Base
- With
- Less

Date Purchased: _____

Author: JBC

Size of Dock: _____

Date Modified: March 10, 2011



#	What to do!	How to do it!	Why you do it!	Completed
6	Push trim piece down into place			
7	Insert screw	Finger turn a screw into the nut in channel. Repeat on all holes in trim piece	Do not use a power driver to install screws to avoid stripping	
8	Tighten all screws in strip	Use a hand screwdriver to tighten all screws. Avoid over tightening	Power drivers may tighten too much and distort the trim strip	
REPEAT THE SAME PROCESS TO ALL THE REMAINING TRIM PIECES				

Comments or Notes:

