

Instruction Sheet

Element Name:
Equa Dock: Configuration Of Dock To Be Assembled

- Base
- With
- Less

Date Purchased: _____

Author: JBC

Size of Dock: _____

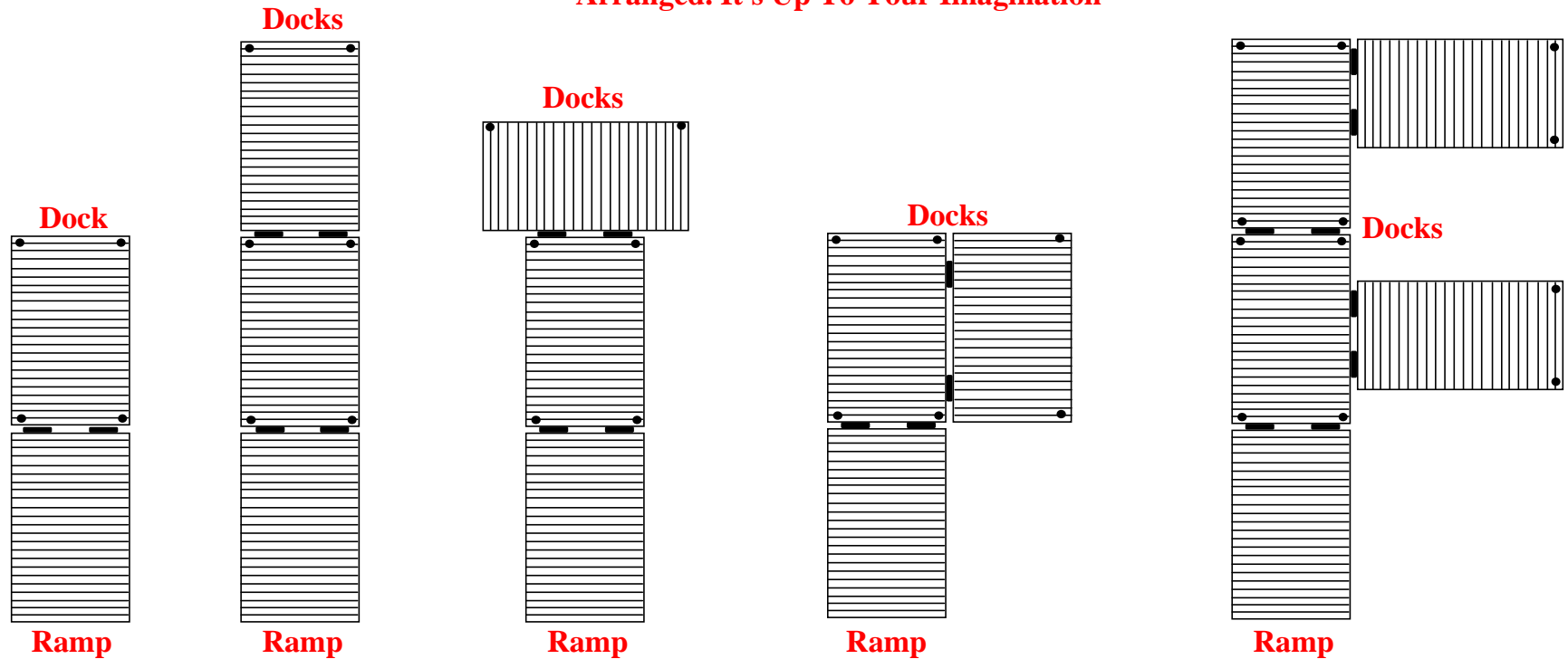
Date Modified: March 11, 2011



What to do!	How to do it!	Why you do it!

The "Equa Dock" can be configured in many different ways. For example as an end to end, a side to side or a side to an end dock. Determine which configuration you are going to assemble the dock then that will determine where the leg supports and connecting brackets will be assembled to.

Just about Any Configuration Can Be Arranged. It's Up To Your Imagination



Instruction Sheet

Product
Equa Dock

Element Name:
**Equa Dock: Corner Leg Bracket
 Assembly; Insert Carriage Bolts**

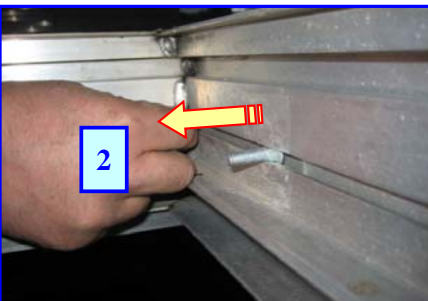
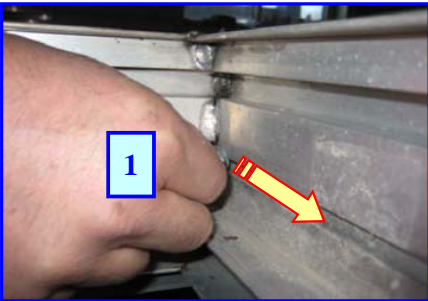
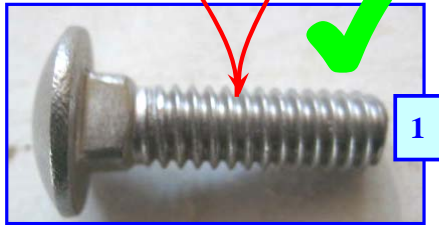
- Base
- With
- Less

Date Purchased: _____

Author: JBC

Size of Dock: _____

Date Modified: March 11, 2011



**REPEAT THESE STEPS ON ALL LEG
 SUPPORT BRACKETS TO BE
 INSTALLED ON ALL SECTIONS OF
 THE DOCK**

#	What to do!	How to do it!	Why you do it!	Completed
	Flip dock over	It is recommended to flip the dock and assemble the leg supports from the bottom side. It has the channels on the bottom		
1	Insert carriage bolts into frame	Get 2 5/16 X 1" carriage bolts and slide one inserting it into the corner opening and slide along channel		
2	Insert the second bolt into the opposite channel			

Comments or Notes:

Instruction Sheet

Product
Equa Dock

Element Name:

**Equa Dock: Corner Leg Bracket
 Assembly; Insert Channel Nuts**

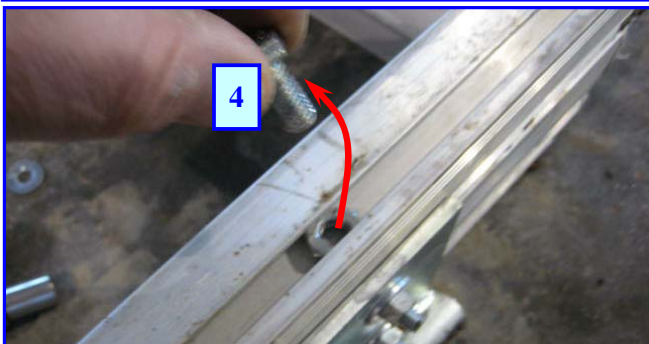
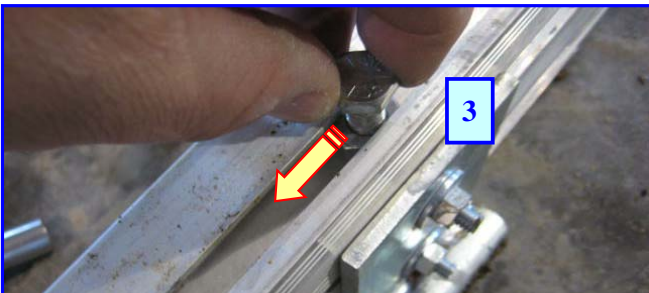
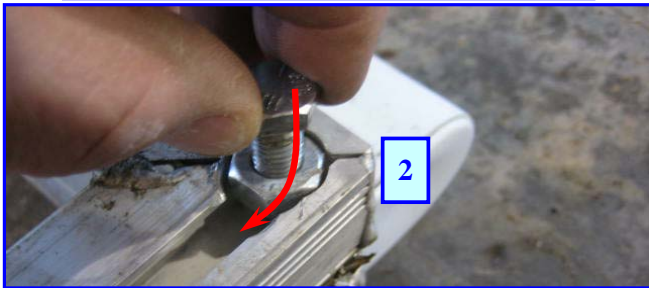
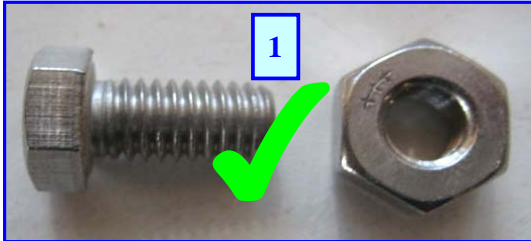
- Base
- With
- Less

Date Purchased: _____

Author: JBC

Size of Dock: _____

Date Modified: March 11, 2011



#	What to do!	How to do it!	Why you do it!	Completed
1	Get 4 3/4 X 1" bolts and nuts	Use Nut and bolt shown		
2	Insert nut and bolt into corner of channel	With bolt attached to nut, insert nut into the corner channel. You may have to wiggle it a bit to insert		
3	Slide the bolt and nut along the channel to the approximate location for the leg support			
4	Remove the bolt			

Comments or Notes:

Instruction Sheet

Product
Equa Dock

Element Name:
**Equa Dock: Corner Leg Bracket
 Assembly; Insert Channel Nuts (Con't)**

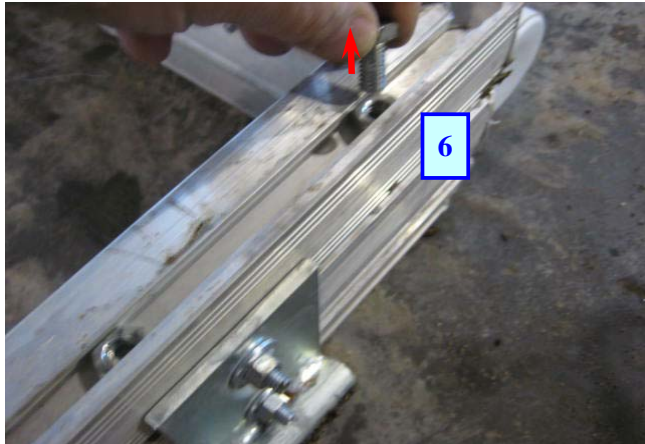
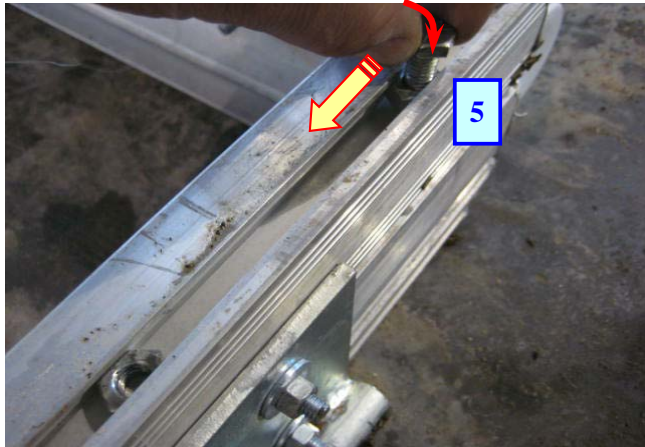
- Base
- With
- Less

Date Purchased: _____

Author: JBC

Size of Dock: _____

Date Modified: March 11, 2011



#	What to do!	How to do it!	Why you do it!	Completed
5	Insert and slide the next bolt and nut into the channel			
6	Also remove the bolt			

Comments or Notes:

Instruction Sheet

Product
Equa Dock

Element Name:
**Equa Dock: Corner Leg Bracket
 Assembly; Insert Channel Nuts (Con't)**

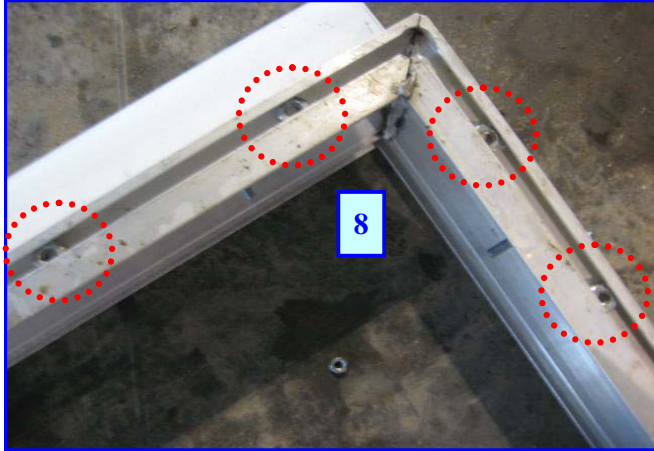
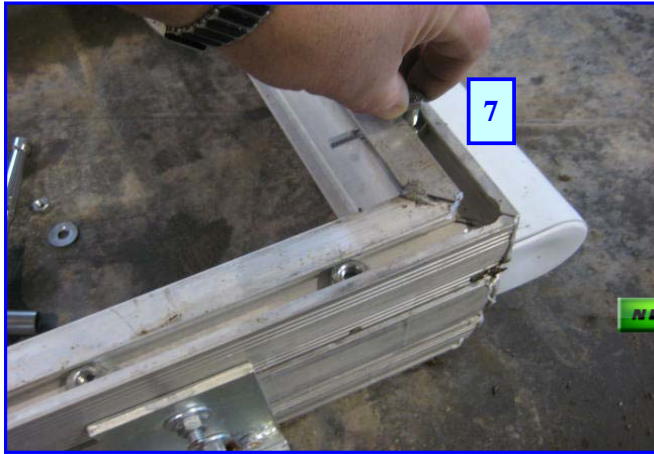
- Base
- With
- Less


Date Purchased: _____

Author: JBC

Size of Dock: _____

Date Modified: March 11, 2011



#	What to do!	How to do it!	Why you do it!	Completed
7	Repeat on adjoining channel with 2 nuts and bolts			
7	All 4 nuts now in the bottom channel			
 REPEAT THESE STEPS ON ALL LEG SUPPORT BRACKETS TO BE INSTALLED ON ALL SECTIONS OF THE DOCK				

Comments or Notes:

Instruction Sheet

Product
Equa Dock

Element Name:
**Equa Dock: Corner Leg Support
 Assembly; Place Leg Support**

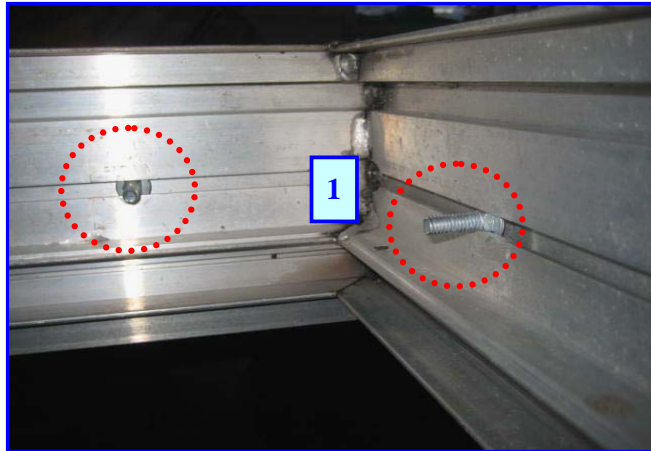
- Base
- With
- Less

Date Purchased: _____

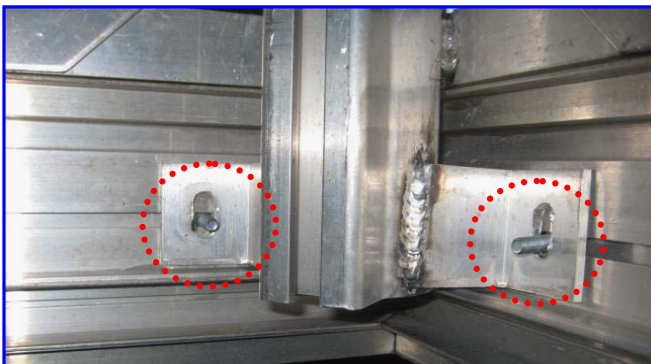
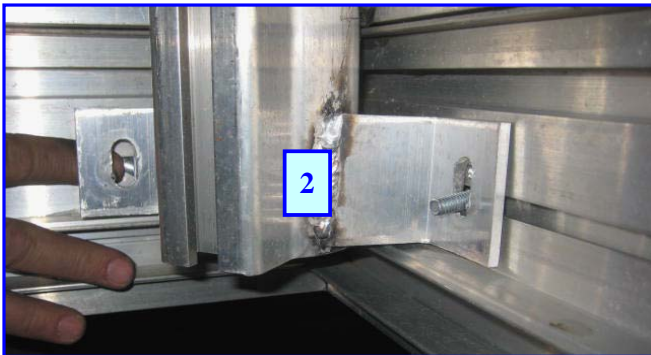
Author: JBC

Size of Dock: _____

Date Modified: March 11, 2011



#	What to do!	How to do it!	Why you do it!	Completed
1	Locate to approximate location of leg support			
2	Place support to bolts	Place the leg support with the bottom plates of the leg support on the top of the dock channel. Adjust the bracket over the 2 protruding bolts on the inside of the dock corner		



Comments or Notes:

Instruction Sheet

Product
Equa Dock

Element Name:

Equa Dock: Corner Leg Support Assembly; Secure Leg Support

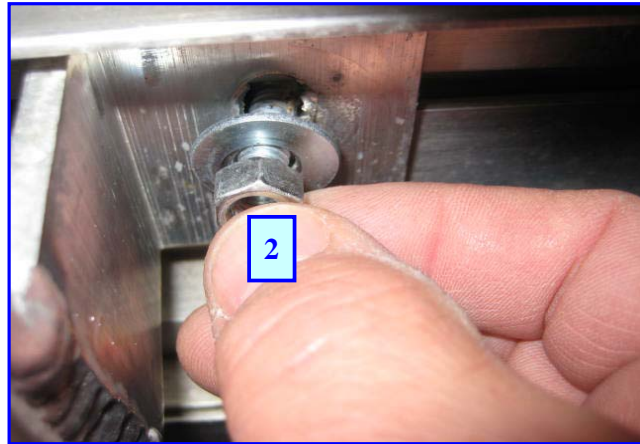
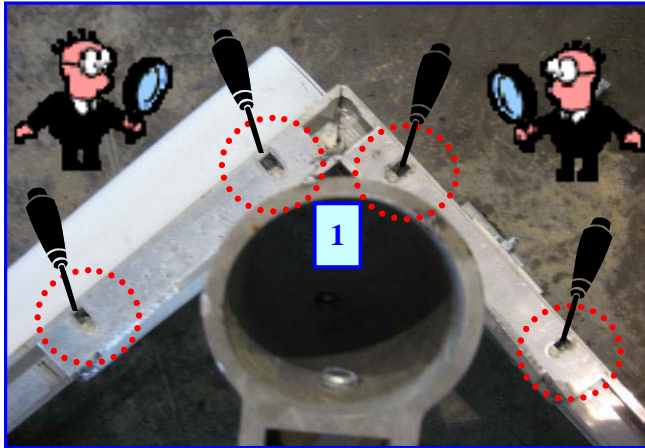
- Base
- With
- Less

Date Purchased: _____

Author: JBC

Size of Dock: _____

Date Modified: March 11, 2011



#	What to do!	How to do it!	Why you do it!	Completed
1	Align nuts in channel to the leg support	Check and align the nuts in the channel to line up with the leg support secure slots.		
2	Thread 2 nuts and 2 washers to the inside protruding bolts	Only thread the nuts on loose. Do not tighten yet	To allow some adjustment alignment to be able to thread in the 4 bottom secure bolts on the leg support	

Comments or Notes:

Instruction Sheet

Product
Equa Dock

Element Name:
**Equa Dock: Corner Leg Support
 Assembly; Secure Leg Support (Con't)**

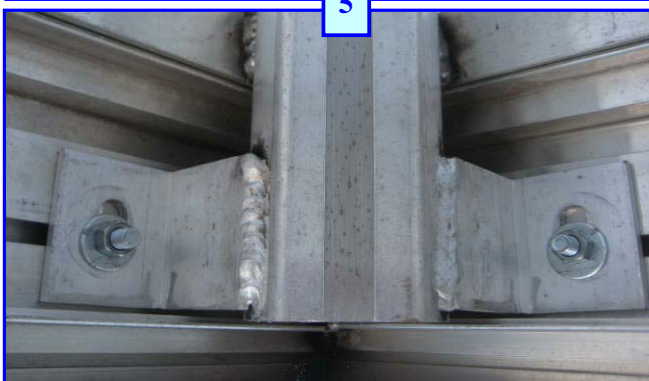
- Base
- With
- Less

Date Purchased: _____

Author: JBC

Size of Dock: _____

Date Modified: March 11, 2011



#	What to do!	How to do it!	Why you do it!	Completed
5	Tighten both inside leg support nuts	Use a 1/2" socket or wrench to tighten both inside leg support nuts		
	REPEAT THESE STEPS ON ALL LEG SUPPORT BRACKETS TO BE INSTALLED ON ALL SECTIONS OF THE DOCK			

Comments or Notes:

Instruction Sheet

Product
Equa Dock

Element Name:
**Equa Dock: Install Dock Joiner
 Brackets**

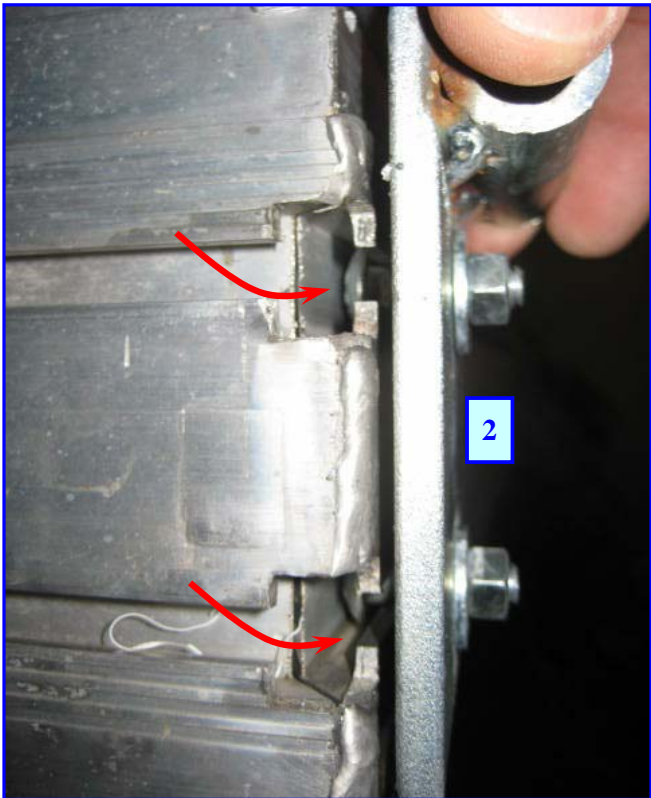
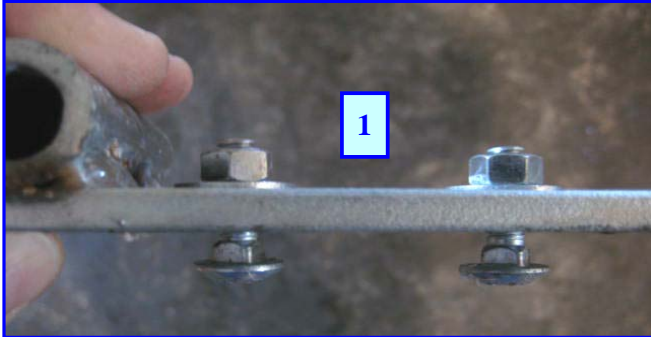
- Base
- With
- Less

Date Purchased: _____

Author: JBC

Size of Dock: _____

Date Modified: March 11, 2011



#	What to do!	How to do it!	Why you do it!	Completed
	This step is required to install multiple dock sections together			
1	Assemble bracket	Use two 5/16 X 1" carriage bolts, 2 nuts and 2 washers per bracket. Loosely assemble bolts to bracket		
2	Slide bracket into inside slots of the dock channel			

Comments or Notes:

Instruction Sheet

Product
Equa Dock

Element Name:
**Equa Dock: Install Dock Joiner
 Brackets (Con't)**

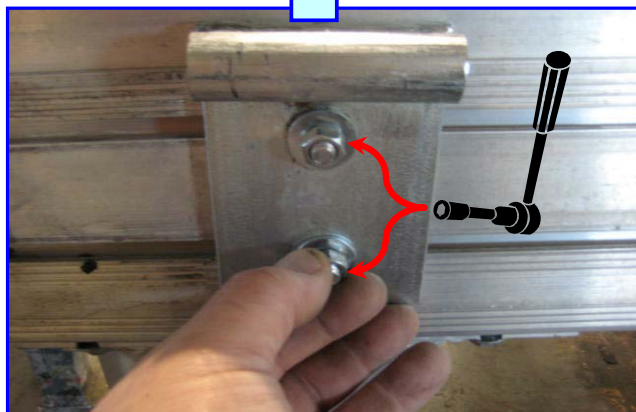
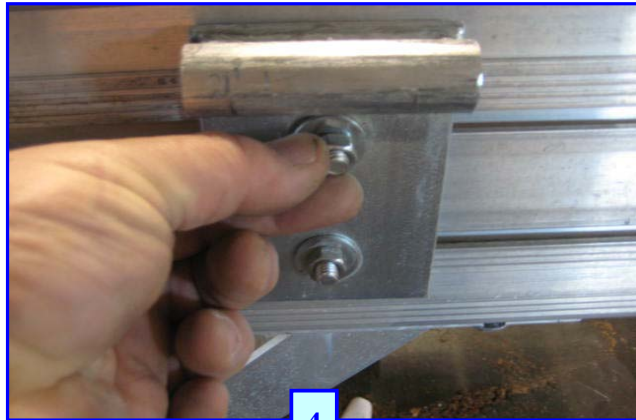
- Base
- With
- Less

Date Purchased: _____

Author: JBC

Size of Dock: _____

Date Modified: March 11, 2011



#	What to do!	How to do it!	Why you do it!	Completed
3	Align bracket	Slide the bracket along the dock edge channel. Measure a distance from the edge of the main dock and transfer that measurement to adjoining dock section. Place bracket on the other dock to the edge measurement to be able to join with locking pin. DO NOT PLACE JOINER BRACKETS EQUAL DISTANCE FROM EDGE	If the brackets are equal (across from each other), they cannot be joined together	
4	Secure nuts	Tighten nuts using a 1/2" socket or wrench		

Comments or Notes:

Instruction Sheet

Product
Equa Dock

Element Name:
Equa Dock: Connect Multiple Sections With Pin

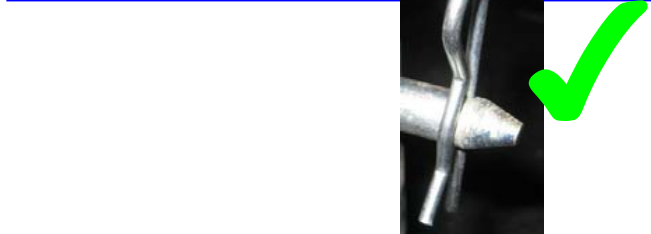
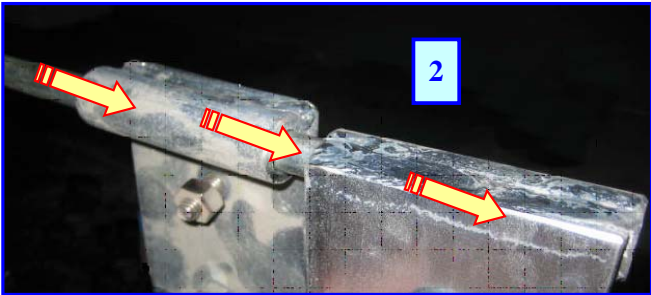
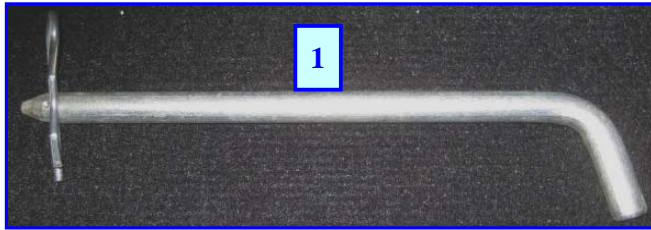
- Base
- With
- Less

Date Purchased: _____

Author: JBC

Size of Dock: _____

Date Modified: March 11, 2011



#	What to do!	How to do it!	Why you do it!	Completed
1	Joiner Pin with cotter pin			
2	Join dock sections	Place next section of dock to be joined. Slide the pin from the outside of the dock to the inside through both brackets		
3	Insert cotter pin	Push cotter pin fully through the hole in the end to lock brackets together		

Comments or Notes:

Instruction Sheet

Product
Equa Dock

Element Name:
Equa Dock: Install Posts To Leg Supports

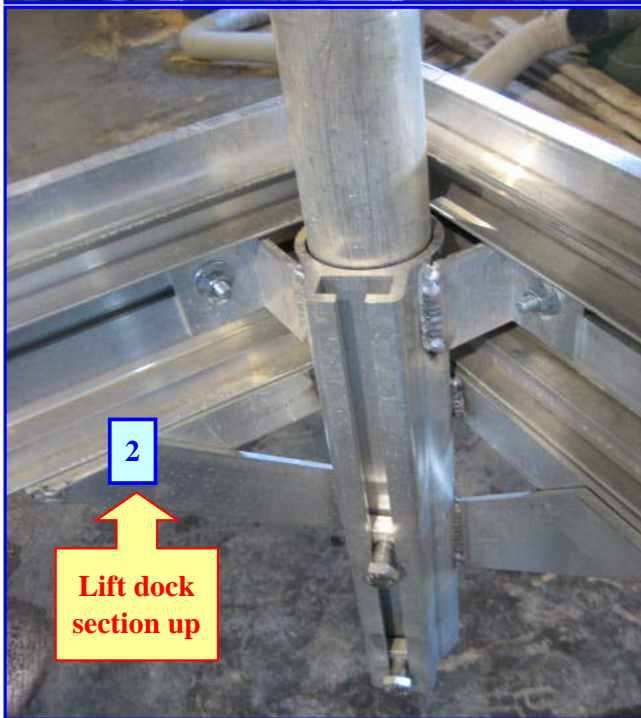
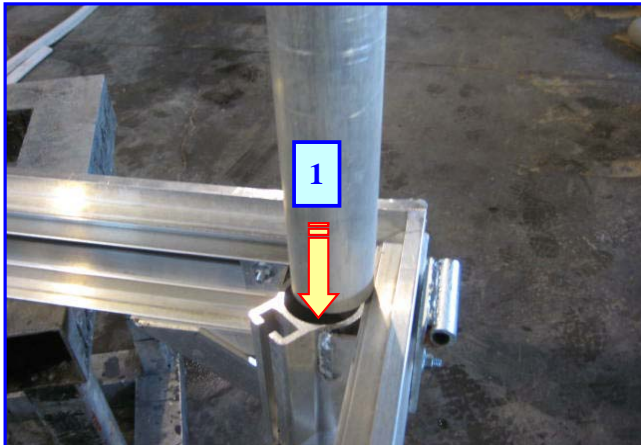
- Base
- With
- Less

Date Purchased: _____

Author: JBC

Size of Dock: _____

Date Modified: March 11, 2011



#	What to do!	How to do it!	Why you do it!	Completed
1	Install posts to leg supports	Place a section of post into the leg support. DO NOT TIGHTEN SECURE BOLTS		
2	Lift the dock			

Comments or Notes:

Instruction Sheet

Product
Equa Dock

Element Name:

Equa Dock: Install Posts & Foot Plate To Leg Supports (Con't)

- Base
- With
- Less

Date Purchased: _____

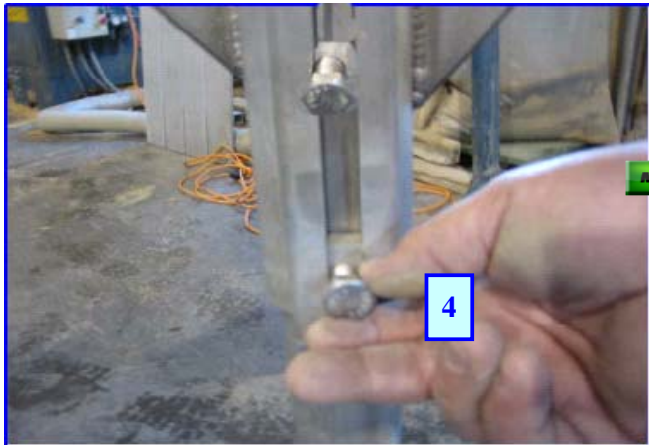
Author: JBC

Size of Dock: _____

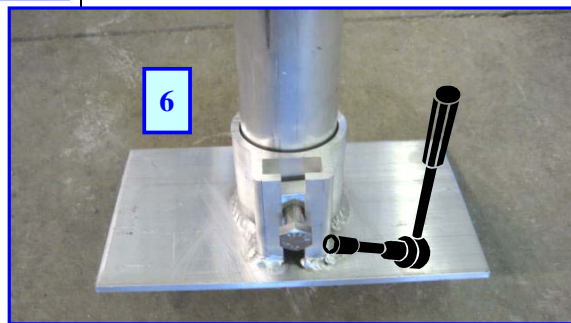
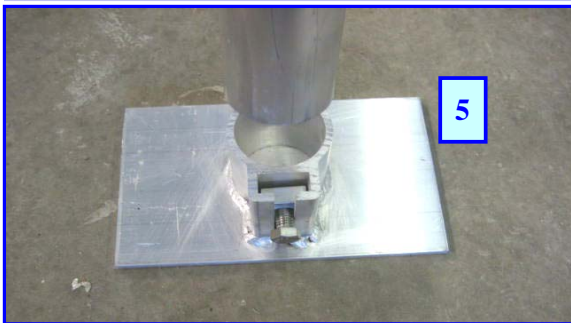
Date Modified: March 11, 2011



#	What to do!	How to do it!	Why you do it!	Completed
3	Pull or let the post drop through the leg support			
4	Tighten top and bottom bolt slightly.	Tighten top and bottom bolt slightly. The posts will have to be adjusted later to the height required to level the dock once it is placed into the lake		
5	Install base plate	Attach a base plate with secure nut and bolt over the end of the leg post		
6	Secure base plate	Use a 3/4" or 19mm wrench and tighten the base plate to the leg post		
<p>REPEAT THESE STEPS ON ALL REMAINING POSTS TO BE INSTALLED ON ALL SECTIONS OF THE DOCK</p>				



Comments or Notes:



Instruction Sheet

Product
Equa Dock

Element Name:
Equa Dock: Install Dock Side Bumpers

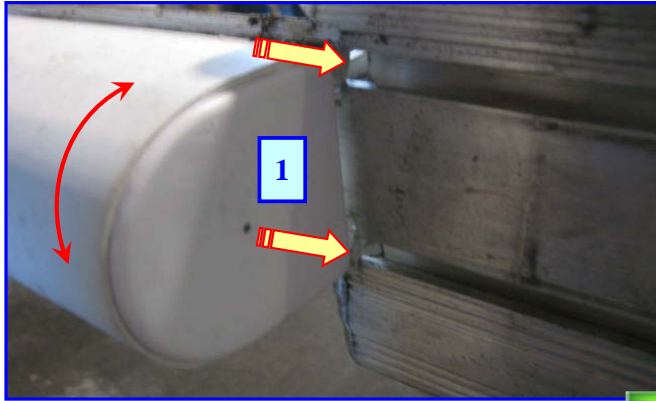
- Base
- With
- Less

Date Purchased: _____

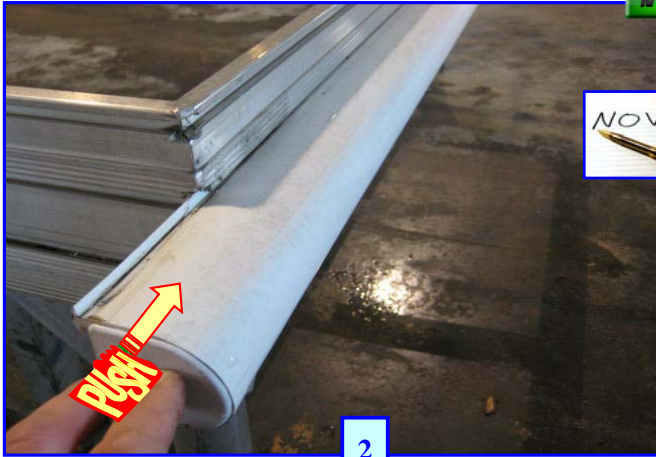
Author: JBC

Size of Dock: _____

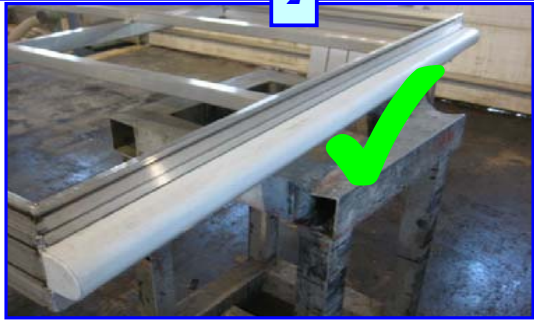
Date Modified: March 11, 2011



#	What to do!	How to do it!	Why you do it!	Completed
1	Install bumper to dock	Get a section of bumper that will fit the section you are going to install it on. Line up the locking tabs on the bumper to the channel on the outside edge of the dock and wiggle it slightly to insert it into the slots.		
2	Push along channel till level with the ends of the dock			
REPEAT THESE STEPS ON ALL REMAINING BUMPER PIECES TO BE INSTALLED ON ALL SECTIONS OF THE DOCK				



The dock is ready to place to the lake. Once in the lake at the desired location, drop all legs to the bottom and adjust the dock to the desired height and level.



Comments or Notes:

Instruction Sheet

Product
Equa Dock

Element Name:
Equa Dock: Install Decking (Aluminum)
(Con't)

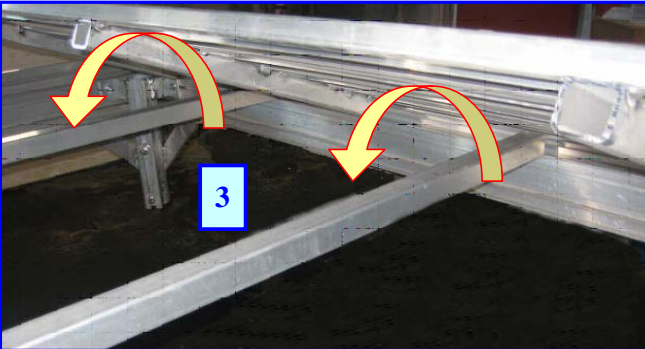
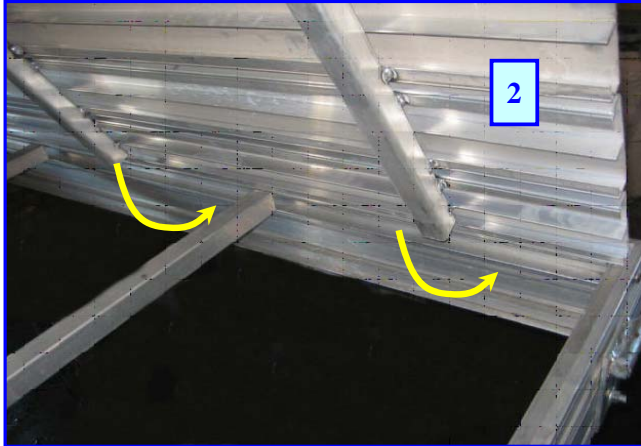
- Base
- With
- Less

Date Purchased: _____

Author: JBC

Size of Dock: _____

Date Modified: **March 11, 2011**



#	What to do!	How to do it!	Why you do it!	Completed
2	Place front or rear section into place			
3	Lay down on dock runners			
4	Push forward into place			

Comments or Notes:

Instruction Sheet

Product
Equa Dock

Element Name:
Equa Dock: Install Decking (Aluminum)
(Con't)

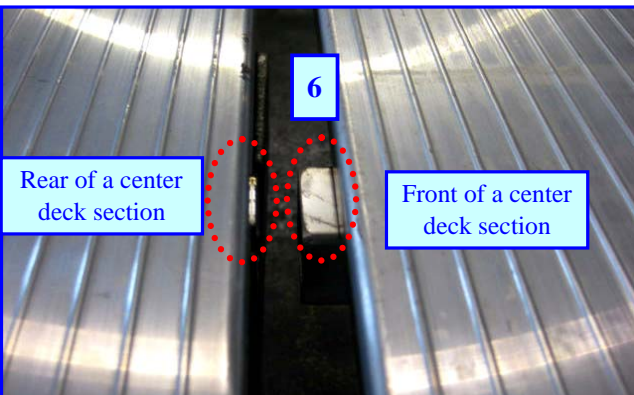
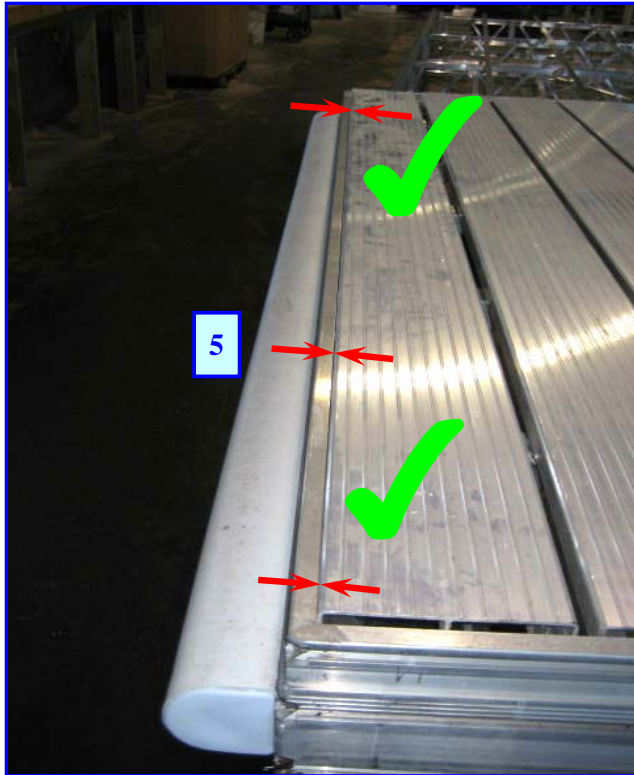
- Base
- With
- Less

Date Purchased: _____

Author: JBC

Size of Dock: _____

Date Modified: March 11, 2011



#	What to do!	How to do it!	Why you do it!	Completed
5	Front or rear section installed and flush to front or rear edge			
6	The front of a center deck section will have protruding pieces of square pipes sticking out the front. The rear of a center section will be flush with the edge of the decking.	Place a middle section of decking on the dock and push flush to the previous section of decking		

Comments or Notes:

Instruction Sheet

Product
Equa Dock

Element Name:
Equa Dock: Install Decking (Aluminum)
(Con't)

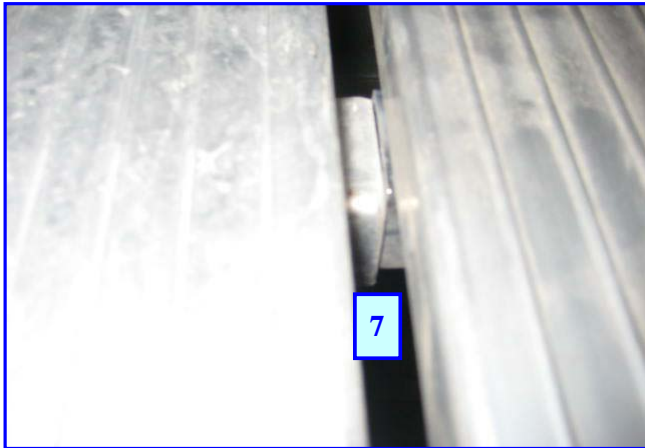
- Base
- With
- Less

Date Purchased: _____

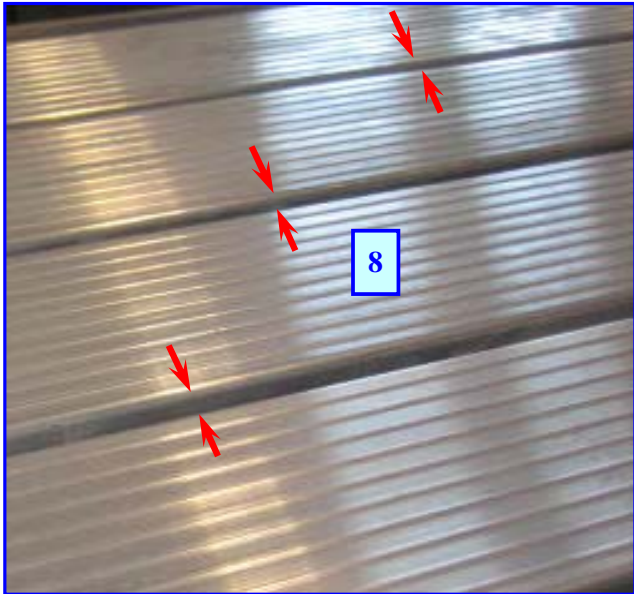
Author: JBC

Size of Dock: _____

Date Modified: **March 11, 2011**



#	What to do!	How to do it!	Why you do it!	Completed
7	Push flush to the previous section of decking.			
8	When installed properly, each section will be at the same gap as the rest of the decking. This will give a unified look to the deck sections			



Comments or Notes:

Instruction Sheet

Product
Equa Dock

Element Name:
Equa Dock: Install Deck Hold Down Strips

- Base
- With
- Less

Date Purchased: _____

Author: JBC

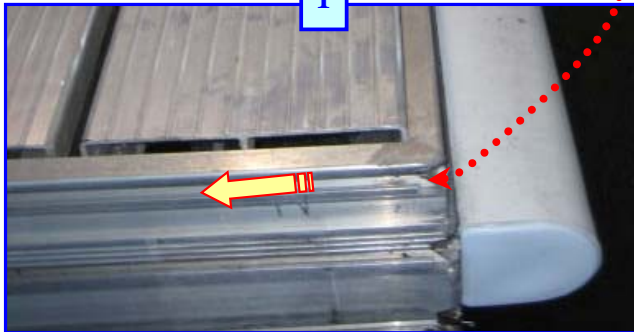
Size of Dock: _____

Date Modified: March 11, 2011

1



1



#	What to do!	How to do it!	Why you do it!	Completed
1	Install hold down strip nuts and screws into dock edge channel	Get as many 5/16" X 3/4 screws and nuts that are required to secure the hold down strip. Thread the nut onto the screw and slide the required amount into the side channel of the dock edge. Count the slots on the hold down section to determine quantity		

Comments or Notes:

Instruction Sheet

Product
Equa Dock

Element Name:
Equa Dock: Install Deck Hold Down Strips (Con't)

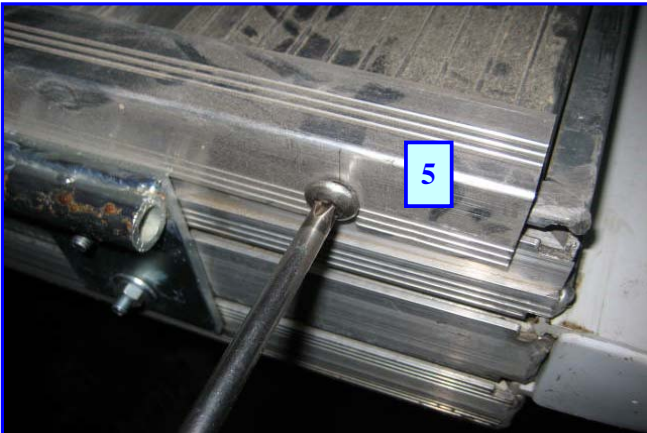
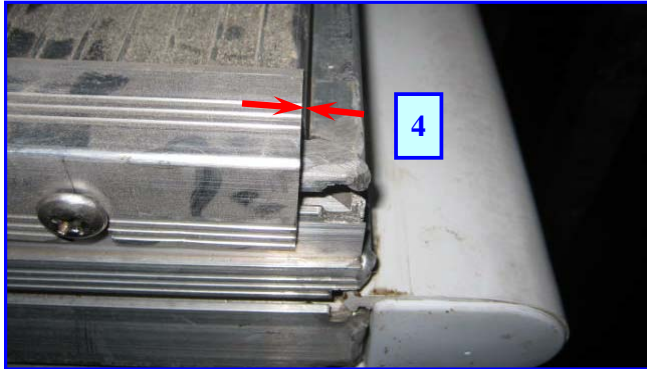
- Base
- With
- Less

Date Purchased: _____

Author: JBC

Size of Dock: _____

Date Modified: March 11, 2011



DONE!



#	What to do!	How to do it!	Why you do it!	Completed
4	Line up strip to front edge of decking	Slide the strip to make it flush with the front edge of the installed decking		
5	Secure the strip	Using a hand screw driver, NOT A POWER DRIVER , tighten all the screws to secure the strip to the dock edge	If you use a power driver, you may distort the hold down strip	

Your dock should now be completed and ready for use!

Comments or Notes:

Trouble Shooting Guide - Equa Dock

Equipment Description/No.		Date Prepared: March 11, 2011	Prepared By:
NUM	Step Description	Step Detail (How, Why, Key Points)	Diagram: (Description, Tools, Special Parts, LayoutS, etc.)